





**Interno**

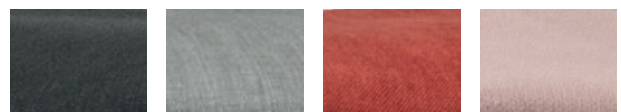
***Indoor***



1904 - RD03

Struttura in metallo verniciato,  
seduta e schienale imbottiti, rivestimento in tessuto  
*Powder coated metal frame,  
padded seat and backrest, fabric covering*


 77cm 41cm 43cm 44cm
 







117 - RD011





 KD  
 101cm 41cm 43cm 66cm

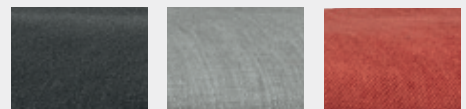

1905 - RD04





 KD  
 111cm 41cm 43cm 76cm

Struttura in metallo verniciato,  
 seduta e schienale imbottiti, rivestimento in tessuto  
*Powder coated metal frame,  
 padded seat and backrest, velvet covering*



N

G

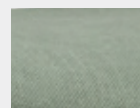
R



ROSA P

SE

B

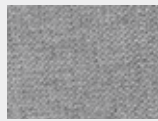


V





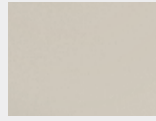
tessuto / fabric



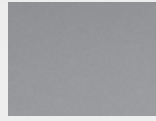
G



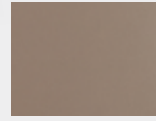
ecopelle / synthetic leather



BE



LG



LM



h A h h  
86cm 45cm 45cm 46cm

□ SEDIA CHAIR  
469 - G1



□ SGABELLO BAR STOOL  
471 - GA3

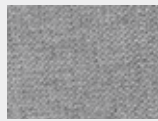
h A h h  
102cm 40cm 40cm 76cm

Struttura in metallo, colore ottone satinato, seduta e schienale imbottiti, rivestimento in tessuto o ecopelle  
Metal frame, brushed brass color, padded seat and backrest, fabric or synthetic leather covering

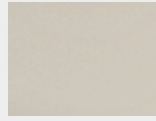


tessuto / fabric

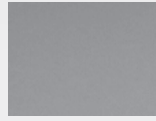
ecopelle / synthetic leather



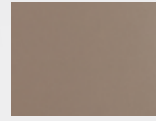
G



BE



LG



LM



h A h h  
86cm 45cm 45cm 46cm

□ SEDIA CHAIR  
470 - GA2

□ SGABELLO BAR STOOL  
474 - GA4

h A h h  
102cm 40cm 40cm 76cm

Struttura in metallo verniciato, seduta e schienale imbottiti, rivestimento in tessuto o ecopelle  
Powder coated metal frame, padded seat and backrest, fabric or synthetic leather covering



1900 - DC01

Struttura in metallo,  
seduta e schienale imbottiti  
rivestimento in velluto

*Powder coated metal frame,  
padded seat and backrest  
velvet covering*

h A h h  
89cm 45cm 43cm 46cm



velluto / velvet



LG

DG



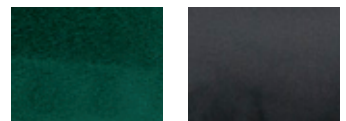
LB

B



R

M



V

N

1901 - DC02

Struttura in metallo,  
seduta e schienale imbottiti  
rivestimento in velluto

*Powder coated metal frame,  
padded seat and backrest  
velvet covering*

h A h h  
86cm 46cm 46cm 46cm





467 - DC92B

Struttura in metallo verniciato, seduta e schienale imbottiti, rivestimento in ecopelle, piedini regolabili

*Powder coated metal frame, padded seat and backrest, synthetic leather covering, adjustable feet*

h A h h  
78cm 44cm 43cm 45cm

ecopelle / synthetic leather



W



BE



LG



DG



468 - DC91

Struttura in metallo ottonato, seduta e schienale imbottiti,  
rivestimento in velluto o ecopelle, piedini regolabili

*Metal frame gold effect, padded seat and backrest, velvet or  
synthetic leather covering, adjustable feet*

velluto / velvet



LB



V



R



SE

h A h h  
78cm 44cm 43cm 45cm



*ecopelle / synthetic leather*



W



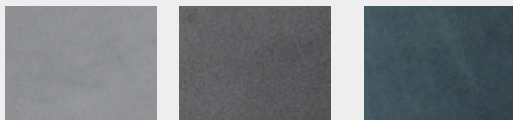
BE



LG



DG



LG

DG

LB



DB

V



R

SE

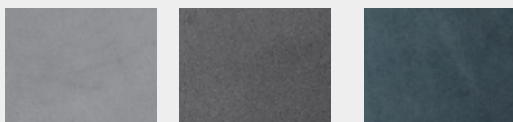
1652 - J02

h A h h KD  
79cm 44cm 42cm 46cm

Struttura in metallo ottonato, seduta e schienale imbottiti,  
rivestimento in velluto

*Metal frame, gold effect, padded seat and backrest, velvet  
covering*





LG

DG

LB



DB

V



R

SE

1651 - J01G

h A h h KD  
98cm 44cm 42cm 66cm

1764 - JA6G

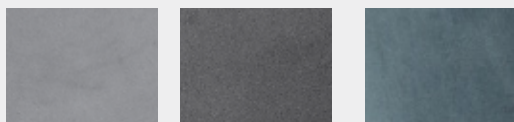
h A h h KD  
108cm 44cm 42cm 76cm



Struttura in metallo ottonato, seduta e schienale imbottiti,  
rivestimento in velluto

*Metal frame, gold effect, padded seat and backrest, velvet  
covering*





LG

DG

LB



DB

V



R

SE

1761 - JB1

 KD  
 79cm 44cm 42cm 46cm


Struttura in metallo verniciato, seduta e schienale imbottiti, rivestimento in velluto

*Powder coated metal frame, padded seat and backrest, velvet covering*







1762 - JB4

h A h h KD  
98cm 44cm 42cm 66cm

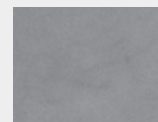


1763 - JA6

h A h h KD  
108cm 44cm 42cm 76cm

Struttura in metallo verniciato, seduta e schienale imbottiti, rivestimento in velluto

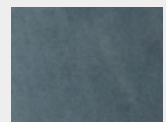
*Powder coated metal frame, padded seat and backrest, velvet covering*



LG



DG



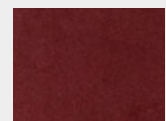
LB



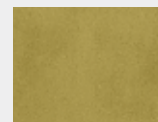
DB



V



R



SE





1760 - S49

Struttura in metallo ottonato,  
seduta e schienale imbottiti,  
rivestimento in velluto

*Metal frame, gold effect,  
padded seat and backrest,  
velvet covering*

h A h h KD  
77cm 110cm 43cm 46cm

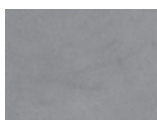


1767 - S50

Struttura in metallo verniciato,  
seduta e schienale imbottiti,  
rivestimento in velluto

*Powder coated metal frame,  
padded seat and backrest,  
velvet covering*

h A h h KD  
77cm 110cm 43cm 46cm



LG



DG



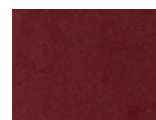
LB



DB



V



R



SE





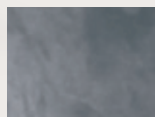
1863 - FR02

85cm 45cm 43cm 48cm KD

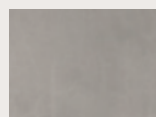
Struttura in metallo ottonato, seduta e schienale imbottiti, rivestimento in velluto

*Metal frame, gold effect, padded seat and backrest, velvet covering*

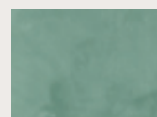
velluto / velvet



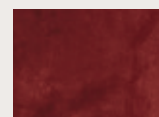
G



LG



LV



BO

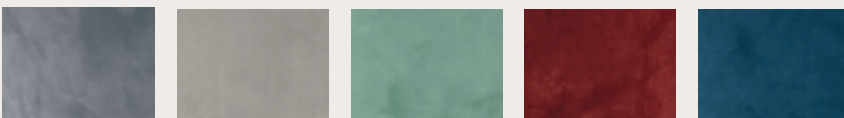


B



Struttura in metallo ottonato,  
seduta e schienale imbottiti,  
rivestimento in velluto  
*Metal frame, gold effect,  
padded seat and backrest,  
velvet covering*

velluto / velvet



G

LG

LV

B0

B

1867 - FR06

h A h h KD  
90cm 45cm 43cm 64cm

080 - FR25

h A h h KD  
103cm 45cm 43cm 75cm



1865 - FR04







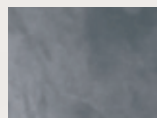
 KD  
 85cm 45cm 43cm 48cm

Struttura in metallo verniciato, seduta e schienale imbottiti, rivestimento in velluto

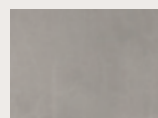
*Powder coated metal frame, padded seat and backrest, velvet covering*



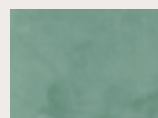
velluto / velvet



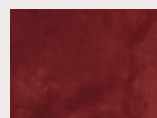
G



LG



LV



BO



B

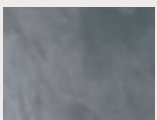




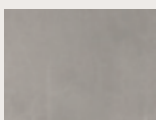
Struttura in metallo verniciato,  
seduta e schienale imbottiti,  
rivestimento in velluto

*Powder coated metal frame,  
padded seat and backrest,  
velvet covering*

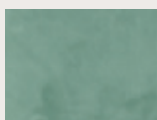
velluto / velvet



G



LG



LV



BO



B

1868 - FR07

h A h h KD  
92cm 45cm 43cm 64cm

081 - FR26

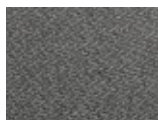
h A h h KD  
103cm 45cm 43cm 75cm



tessuto / fabric



LG



DG



DB

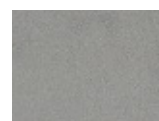
1938 - UK01

Struttura in metallo ottonato,  
seduta e schienale imbottiti,  
rivestimento in tessuto o velluto

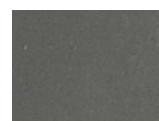
*Metal frame, gold effect,  
padded seat and backrest,  
fabric or velvet covering*

h A h h KD  
77cm 44cm 45cm 47cm

velluto / velvet



LG



DG



B



V



R



SE



1939 - UK02

Struttura in metallo verniciato, seduta e schienale imbottiti,  
rivestimento in tessuto o velluto

*Powder coated metal frame, padded seat and backrest,  
fabric or velvet covering*

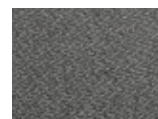


h A h h KD  
77cm 44cm 45cm 47cm

tessuto / fabric



LG

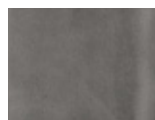


DG



DB

velluto / velvet



LG



DG



B



V



R



SE



□ POLTRONA *SOFA*  
1616 - TOP9

h A h h KD  
74cm 60cm 52cm 40cm

□ SEDIA *CHAIR*  
1615 - TOP8

h A h h KD  
85cm 48cm 46cm 47cm

□ SGABELLO *BARSTOOL*  
087 - TOP21

h A h h KD  
91cm 46cm 43cm 66cm

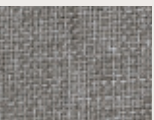
Struttura in metallo verniciato, seduta e schienale imbottiti,  
rivestimento in tessuto o ecopelle  
*Powder coated metal frame, padded seat and backrest,  
fabric or synthetic leather covering*

1617 - TOP10

h A h h KD  
101cm 46cm 43cm 76cm



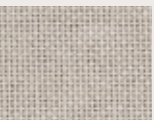
tessuto / fabric



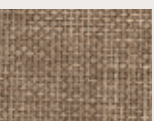
LG



DG



BE



LM





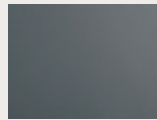
*ecopelle / synthetic leather*



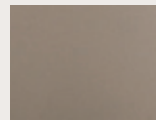
W



N



DG



T





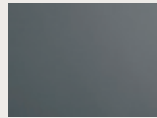
*ecopelle / synthetic leather*



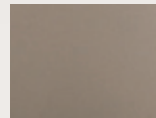
W



N



DG



T





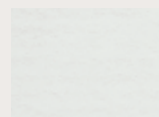
1954 - E14

Struttura in metallo verniciato, scocca imbottita,  
rivestimento in ecopelle

*Powder coated metal frame, padded shell,  
synthetic leather covering*

h A h h KD  
89cm 42cm 46cm 46cm

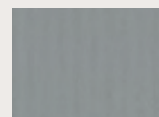
ecopelle / synthetic leather



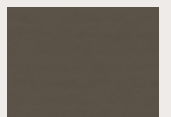
W



N



G



M





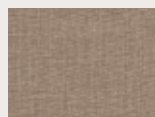
1954 - E14

Struttura in metallo verniciato, scocca imbottita,  
rivestimento in tessuto

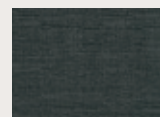
*Powder coated metal frame,  
padded shell, fabric covering*

h A h h KD  
89cm 42cm 46cm 46cm

tessuto / fabric



BE



DG

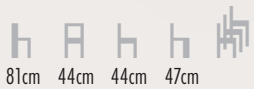


G



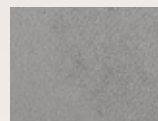
539 - AV01

Struttura in metallo verniciato, seduta e schienale imbottiti, rivestimento in velluto  
*Powder coated metal frame, padded seat and backrest, velvet covering*

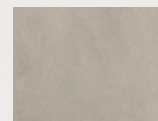


81cm 44cm 44cm 47cm

velluto / velvet



G



T



B



V



R



540 - AV012

Struttura in metallo verniciato, seduta e schienale imbottiti, rivestimento in velluto

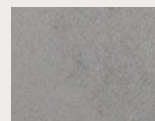
*Powder coated metal frame, padded seat and backrest, velvet covering*



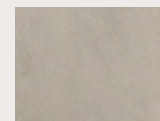



  
 102cm 40cm 42cm 75cm

velluto / velvet



G



T



B



V



R



1528 - T07

Struttura in metallo verniciato,  
seduta e schienale imbottiti,  
rivestimento in ecopelle

*Powder coated metal frame,  
padded seat and backrest,  
synthetic leather covering*

h A h h KD  
82cm 45cm 45cm 48cm

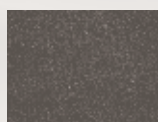
**W N M G T**

1693 - F450

Struttura in metallo verniciato,  
seduta e schienale imbottiti,  
rivestimento in velluto

*Powder coated metal frame,  
padded seat and backrest,  
velvet covering*

h A h h KD  
81cm 43cm 46cm 46cm



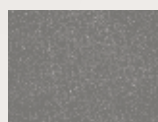
M



T



VI



G



V



R



1438 - C50W

Struttura in metallo verniciato, gambe in legno di faggio, seduta e schienale imbottiti, rivestimento in tessuto  
*Powder coated metal frame, wood legs, padded seat and backrest, fabric covering*

h A h h KD  
 81cm 44cm 44cm 48cm

tessuto / fabric



G



DB



tessuto / fabric



G



DB

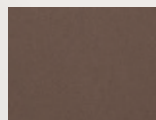


1439 - C50P

Struttura in metallo verniciato,  
seduta e schienale imbottiti,  
rivestimento in tessuto o ecopelle  
*Powder coated metal frame,  
padded seat and backrest,  
fabric or synthetic leather covering*

h A h h KD  
81cm 44cm 44cm 48cm

ecopelle / synthetic leather



M



732 - MG01

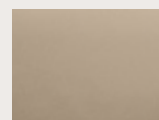
Struttura in metallo verniciato,  
seduta e schienale imbottiti, rivestimento in ecopelle  
*Powder coated metal frame, padded seat  
and backrest, synthetic leather covering*

h A h h KD  
76cm 47cm 47cm 45cm

tessuto / fabric



LG



T





☐ POLTRONCINA *ARMCHAIR*  
182 - XR3

h A h h KD  
83cm 52cm 46cm 47cm

☐ SEDIA *CHAIR*  
183 - XR4

h A h h KD  
84cm 45cm 44cm 46cm

Struttura in metallo verniciato, scocca  
imbottita, rivestimento in ecopelle  
*Powder coated metal frame, padded shell,  
synthetic leather covering*



M



G

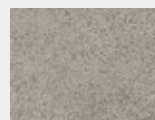


1927 - TD03

Struttura in metallo verniciato,  
scocca imbottita in ecopelle

*Powder coated metal frame,  
padded shell,  
synthetic leather covering*

h A h h KD  
83cm 43cm 40cm 47cm



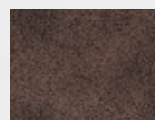
LG



DG



BE



M



V



1928 - TD04

Struttura in metallo verniciato,  
scocca imbottita in ecopelle

*Powder coated metal frame,  
padded shell,  
synthetic leather covering*

h A h h KD  
108cm 40cm 35cm 76cm



LG



DG



BE



M



V



1803 - DC81

Struttura in metallo verniciato,  
scocca imbottita in tessuto

*Powder coated metal frame,  
padded shell in fabric covering*

h A h h KD  
81cm 45cm 42cm 45cm



G



M



1802 - DC80

Struttura in metallo ottonato,  
scocca imbottita in tessuto

*Metal frame, gold effect,  
padded shell in fabric covering*

h A h h KD  
81cm 45cm 42cm 45cm



1748 - XH9

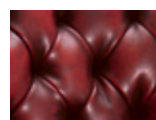
h A h h KD  
86cm 44cm 39cm 46cm



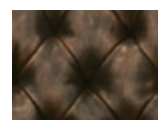
171 - XH11

h A h h KD  
106cm 44cm 39cm 75cm

Struttura in metallo verniciato,  
scocca imbottita in ecopelle anticata  
*Powder coated metal frame,  
padded shell in antique synthetic  
leather covering*



R



M



821 - RF49C

Struttura in metallo cromato,  
seduta e schienale imbottiti,  
rivestimento in ecopelle

*Chromed metal frame,  
padded seat and backrest,  
synthetic leather covering*



90cm 41,5cm 41,5cm 46cm



W N M



825 - RF49P

Struttura in metallo verniciato,  
seduta e schienale imbottiti,  
rivestimento in ecopelle

*Powder coated metal frame,  
padded seat and backrest,  
synthetic leather covering*



90cm 41,5cm 41,5cm 46cm



W N M G





949 - F400

Struttura in metallo,  
seduta e schienale imbottiti,  
rivestimento in ecopelle

*Metal frame, padded seat and backrest,  
synthetic leather covering*



87cm 43cm 40cm 47,5cm







948 - F503

Struttura in metallo,  
seduta e schienale imbottiti,  
rivestimento in ecopelle

*Metal frame, padded seat and backrest,  
synthetic leather covering*



96cm 43cm 40cm 47cm



W N R M G T



1451 - 7BD

Struttura in metallo, seduta e schienale imbottiti, rivestimento in ecopelle

*Metal frame, padded seat and backrest, synthetic leather covering*

  
 87cm 42cm 41cm 47cm

1456 - 30D

Struttura in metallo, seduta e schienale imbottiti, rivestimento in ecopelle

*Metal frame, padded seat and backrest, synthetic leather covering*

  
 95cm 42cm 42cm 46cm



1485 - F50

Struttura in metallo, seduta e schienale imbottiti,  
rivestimento in ecopelle  
*Metal frame, padded seat and backrest,  
synthetic leather covering*



99cm 45cm 39cm 47cm



W N G M T





118 - F601

h A h h  
90cm 41cm 37cm 66cm



Struttura in metallo cromato, seduta e schienale imbottiti, rivestimento in ecopelle  
*Chromed metal frame, padded seat and backrest, synthetic leather covering*



1007 - F600

h A h h  
100cm 41cm 37cm 76cm



W N M G T





1524 - D22

h A h h KD  
83cm 45cm 42cm 46cm

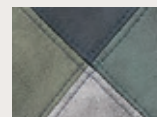


1523 - D23

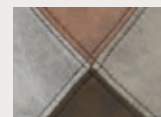
h A h h KD  
80cm 44cm 40cm 46cm

Struttura in legno di faggio e metallo verniciato,  
scocca imbottita rivestimento in tessuto

*Powder coated metal and beech wood frame,  
padded shell, fabric covering*



PK18



PK17



□ SEDIA CHAIR  
542 - BX01

h 89cm

h 45cm

h 40cm

h 46cm

Struttura in legno di faggio e metallo verniciato, scocca imbottita, rivestimento in tessuto  
*Powder coated metal and beech wood frame, padded shell, fabric covering*

□ POLTRONCINA ARMCHAIR  
543 - BX02

h 80cm

h 42cm

h 40cm

h 45cm





1193 - PW72

Struttura in legno, scocca in polipropilene, seduta in ecopelle  
*Wood frame, polypropylene shell, synthetic leather pad*





 KD  
 81cm 48cm 43cm 46cm







  
 W N R A G V Y



1335 - W58

Struttura in metallo verniciato, gambe in legno,  
scocca imbottita, rivestimento in ecopelle

*Powder coated metal frame,  
wood legs, padded shell,  
synthetic leather covering*

h A h h KD  
85cm 57cm 51cm 47cm

ecopelle / synthetic leather







1335 - W58

Struttura in metallo verniciato,  
gambe in legno, scocca imbottita  
rivestimento in tessuto

*Powder coated metal frame,  
wood legs, padded shell,  
fabric covering*





 KD  
 85cm 57cm 51cm 47cm



tessuto / fabric



N

LR

LB

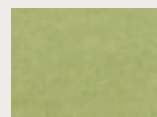
B



G



AZ



V



R



O





1586 - YG100

Struttura in legno multistrato di faggio,  
scocca imbottita, rivestimento in tessuto

*Beech plywood frame, padded shell,  
fabric covering*

h A h h KD  
77cm 46cm 42cm 45cm



541 - YG103

Struttura in metallo verniciato,  
scocca imbottita, rivestimento in ecopelle

*Powder coated metal frame, padded shell,  
synthetic leather covering*

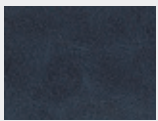
h A h h KD  
77cm 46cm 42cm 45cm



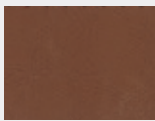
P23



P4



P5



P12



P13



1587 - YG101

Struttura in legno  
multistrato di faggio,  
scocca imbottita,  
rivestimento in ecopelle

*Beech plywood frame,  
padded shell,  
synthetic leather covering*

h A h h KD  
77cm 46cm 42cm 44cm





1488 - YG93

Struttura in legno multistrato di faggio,  
scocca in polipropilene, cuscino in ecopelle

*Beech plywood frame, polypropylene  
shell, synthetic leather pad*

h A h h KD  
76cm 42cm 42cm 44cm



W N LG





1626 - EV10

Struttura in legno di faggio e metallo,  
seduta girevole, scocca in polipropilene,  
cuscino in ecopelle

*Beech wood and metal frame,  
swivel seat, polypropylene shell,  
synthetic leather pad*





 KD  
 84cm 46cm 41cm 46cm

scocca / shell



struttura / frame





465 - AP34

Struttura in legno di faggio e metallo verniciato, scocca in polipropilene

*Powder coated metal and beech wood frame, polypropylene shell*

h A h h  
43cm 44cm 42cm 45cm

W N LG SE



464 - V11

Struttura in legno di faggio, scocca in polipropilene

*Beech wood frame, polypropylene shell*

h A h h  
79cm 44cm 40cm 44cm





W
  N
  G
  T
  V



1525 - D24

Struttura in metallo verniciato, gambe in legno di faggio,  
scocca in polipropilene

*Powder coated metal frame, beech wood legs, polypropylene shell*





 KD  
 75cm 41cm 42cm 45cm





  
 W N LG V B





1322 - Z87

Gambe in legno di faggio,  
scocca in polipropilene

*Beech wood legs,  
polypropylene shell*

h A h h KD  
84cm 43cm 40cm 45cm







1846 - SI02

Struttura in legno verniciato,  
seduta e schienale imbottiti,  
rivestimento in ecopelle

*Painted wood frame,  
padded seat and backrest,  
synthetic leather covering*

  
 100cm 44cm 38cm 48cm

  
 W N DG LG M



1042 - C25F

Struttura in legno di faggio,  
seduta imbottita

*Beech wood frame,  
seat with pad*

  
 84cm 43cm 50cm 46cm



1041 - C25

Struttura in legno di faggio,  
seduta in legno multistrato

*Beech wood frame,  
plywood seat*

  
 84cm 43cm 50cm 46cm

  
 NA W R A V M





1847 - SI03

Struttura in legno di faggio

*Beech wood frame*




  
 110cm 38cm 38cm 79cm



1848 - SI04

Struttura in legno di faggio

*Beech wood frame*




  
 80cm 38cm 38cm 47cm







1037 - G03

Struttura in legno di faggio,  
 seduta impagliata

*Beech wood frame,  
 natural straw seat*



87cm 40cm 37cm 47cm



W R M G





1036 - G02

Struttura e seduta in legno di faggio

*Frame and seat in beech wood*

h A h h  
 87cm 42cm 39cm 46cm

  
 W R M G





1258 - G04L

Struttura e seduta  
 in legno di faggio  
*Frame and seat  
 in beech wood*

h A h h  
 102cm 40cm 37cm 73cm



■ ■ ■ ■  
 W R M G



1038 - G04

Struttura in legno di faggio,  
 seduta impagliata  
*Beech wood frame,  
 natural straw seat*

h A h h  
 102cm 40cm 37cm 73cm





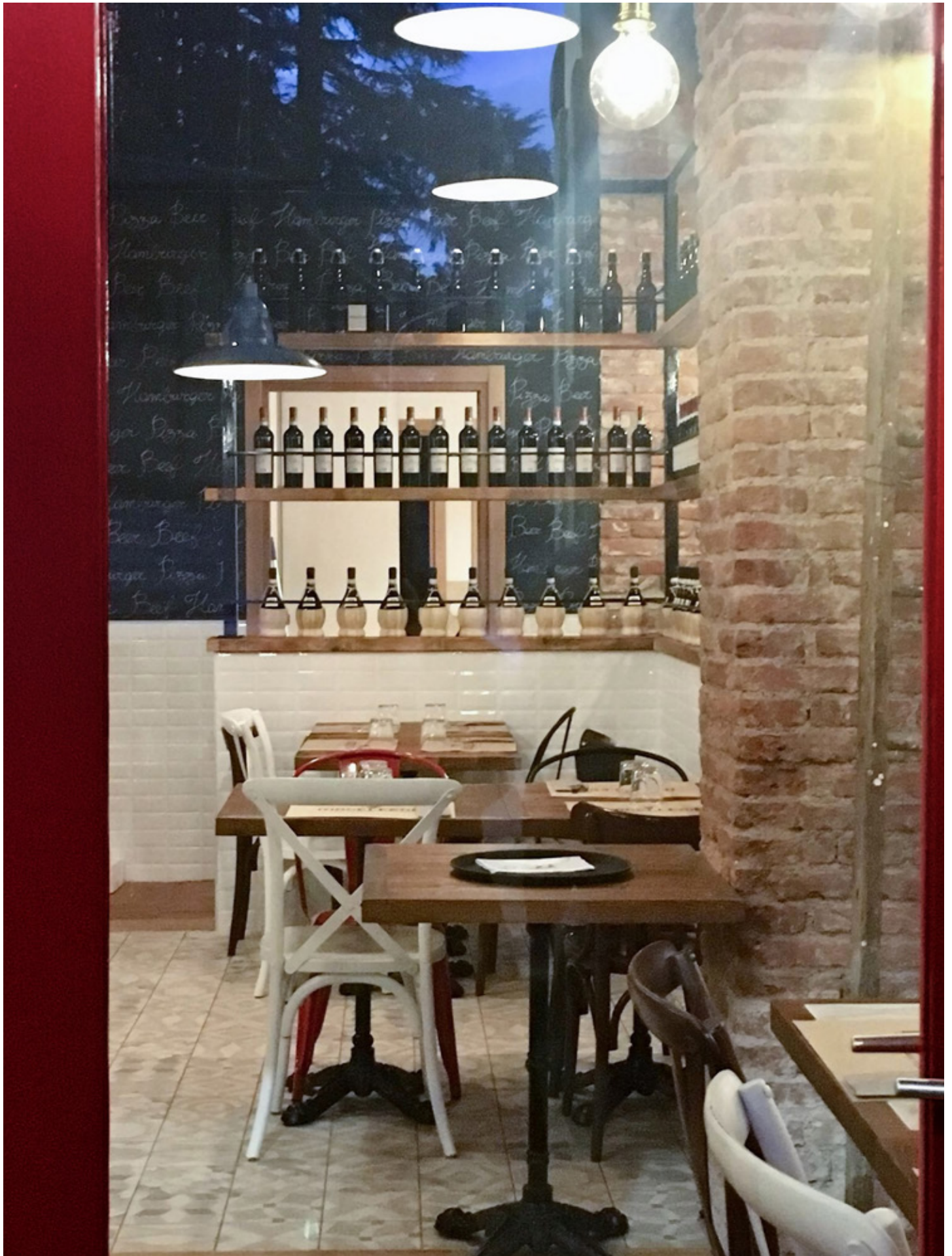
- 240 - G07  
(L70 x P70 x H76 cm)
- 1040 - G06  
(L80 x P80 x H76 cm)
- 241 - G08  
(L90 x P90 x H76 cm)
- 242 - G09  
(L80/140 x P80 x H76 cm)
- 243 - G10  
(L120/180 x P80 x H76 cm)

Struttura in legno di faggio, piano in laminato

*Beech wood frame,  
laminated top*



- 244 - G11  
(L70 x P70 x H76 cm)
- 1039 - G05  
(L80 x P80 x H76 cm)
- 246 - G012  
(L90 x P90 x H76 cm)
- 247 - G013  
(L80/140 x P80 x H76 cm)
- 249 - G014  
(L120/180 x P80 x H76 cm)









1188 - HT36

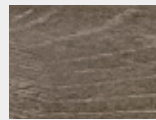
Struttura in legno, effetto anticato,  
seduta in rattan

*Wood frame, antique look,  
rattan seat*

h A h h  
89cm 50cm 54cm 45cm



NA



ST

1321 - HT37

Struttura in legno, effetto anticato,  
seduta in rattan

*Wood frame, antique look,  
rattan seat*

h A h h  
113cm 41cm 36,5cm 76cm



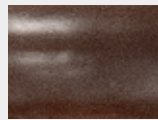


1188 - HT36

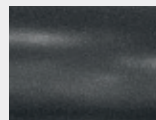
Struttura in legno, seduta in rattan

*Wood frame, rattan seat*

h A h h  
89cm 50cm 54cm 45cm



NO



N

1321 - HT37

Struttura in legno, seduta in rattan

*Wood frame, rattan seat*

h A h h  
113cm 41cm 36,5cm 76cm





1722 - SU22




  
 87cm 44cm 42cm 47cm

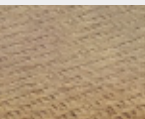
Struttura in legno effetto anticato, seduta in ecopelle o rattan  
*Wood frame antique look, synthetic leather or rattan seat*



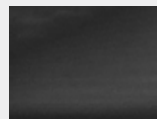
1721 - SU21




  
 87cm 44cm 42cm 47cm



RAT



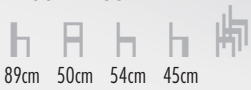
SL



Struttura in legno, schienale in legno e metallo, seduta in ecopelle o rattan  
*Wood frame, wood and metal backrest, synthetic leather or rattan seat*



1186 - HT35



89cm 50cm 54cm 45cm

Struttura in legno  
Wood frame



1440 - HT38



113cm 41cm 36,5cm 76cm



466 - TD90

Struttura in metallo verniciato,  
seduta e schienale in legno multistrato

*Powder coated metal frame,  
seat and backrest in plywood*

h A h h  
83cm 44cm 42cm 47cm



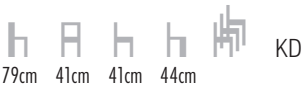
legno / wood



1747 - XH2

Struttura in metallo verniciato, schienale in legno, seduta imbottita in ecopelle

*Powder coated metal frame, plywood backrest, padded seat in synthetic leather covering*



79cm 41cm 41cm 44cm



1777 - M18

Struttura in metallo verniciato, seduta e schienale imbottiti, rivestimento in ecopelle

*Powder coated metal frame, padded seat and backrest in synthetic leather covering*



80cm 44cm 40cm 47cm



1895 - DH02

Struttura in metallo verniciato, scocca in ABS

*Powder coated metal frame, ABS shell*



83cm 46cm 45cm 45cm







1785 - M58

Struttura in metallo verniciato, seduta in legno  
*Powder coated metal frame, wood seat*

□ □  
33cm 74,5cm



1784 - MT14

Struttura in metallo verniciato, piano in legno d'olmo  
*Powder coated metal frame, elm wood top*  
(Ø 60 x H105 cm)



1781 - M82

Struttura in metallo verniciato, seduta in legno  
*Powder coated metal frame, wood seat*

h A h h  
86cm 36cm 36cm 45cm



1786 - MT15

(L80 x P80 x H75 cm)

1787 - MT16

(L120 x P60 x H75 cm) KD

Struttura in metallo verniciato, piano in legno d'olmo  
*Powder coated metal frame, elm wood top*



1779 - M51

Struttura in metallo verniciato, seduta regolabile in legno  
*Powder coated metal frame, adjustable wood seat*

□ □  
 33cm 66/86cm



1778 - M50

Struttura in metallo verniciato, schienale e seduta regolabile in legno  
*Powder coated metal frame, adjustable wood seat and backrest*

h A h h  
 96/113cm 32cm 32cm 66/83cm



1780 - M52

Struttura in metallo verniciato, seduta regolabile in legno  
*Powder coated metal frame, adjustable wood seat*

□ □  
 33cm 40/57cm



1417 - BM37

Struttura in metallo verniciato,  
effetto anticato, seduta regolabile in legno

*Powder coated metal frame,  
antique look, adjustable wood seat*

□ □ KD  
33cm 65/78cm



1800 - MT48

Struttura in metallo verniciato,  
piano in legno

*Powder coated metal frame,  
wood top*

(Ø 42 x H40 cm)



1914 - CD02

Struttura in metallo verniciato,  
seduta regolabile in legno e sughero

*Powder coated metal frame, adjustable seat in wood and cork*

33cm 69/89cm

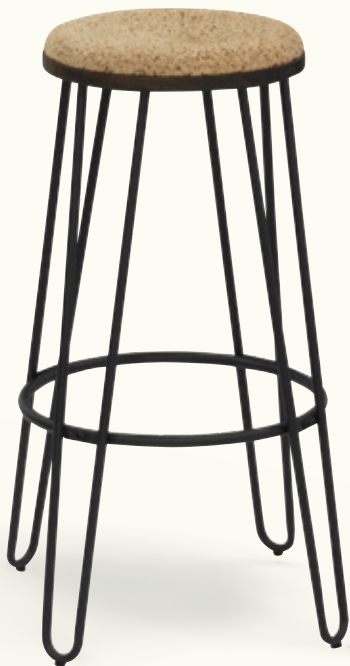


1915 - CD03

Struttura in metallo verniciato,  
seduta regolabile in legno e sughero

*Powder coated metal frame, adjustable seat in wood and cork*

33cm 43/60cm



1916 - CD04

Struttura in metallo verniciato,  
seduta in legno e sughero

*Powder coated metal frame, seat in wood and cork*

33cm 77cm



1913 - CD01

Sgabello in sughero  
*Cork stool*

26cm 46cm



1977 - CD05

Struttura in metallo verniciato,  
seduta in sughero

*Powder coated metal frame,  
cork seat*

□ □ KD  
29cm 58/79cm



976 - ET53

Struttura in metallo verniciato

*Powder coated metal frame*



85cm 36cm 36cm 45cm



W N R





SEDIA CHAIR

978 - EM53W

Struttura in metallo verniciato, seduta in legno

*Powder coated metal frame, wood seat*



85cm 36cm 36cm 45cm



W

N

TAVOLO TABLE

1265 - 70W

(L70 x P70 x H74 cm) KD

972 - 36W

(L80 x P80 x H74 cm) KD

1418 - CT120

(L120 x P80 x H74 cm) KD

Struttura in metallo verniciato / *Powder coated metal frame*

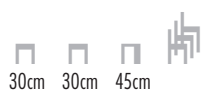




1084 - BT18

Struttura in metallo verniciato

*Powder coated metal frame*







955 - MC012

h A h h KD  
98,5cm 30cm 30cm 76cm



1083 - MC012W

h A h h KD  
98,5cm 30cm 30cm 76cm



977 - BT503

h h h h  
30cm 30cm 76cm



1082 - BT503W

h h h h  
30cm 30cm 76cm

Struttura in metallo verniciato / Powder coated metal frame

Struttura in metallo verniciato, seduta in legno  
Powder coated metal frame, wood seat



1266 - CT60

Struttura in metallo verniciato

*Powder coated metal frame*

(L60 x P60 x H105 cm) KD



W

N



1427 - 01N



85cm 36cm 36cm 45cm



1496 - BT04



30cm 30cm 76cm

Struttura in metallo verniciato, effetto canna di fucile  
*Powder coated metal frame, gun look*



1832 - BS18

Struttura in metallo verniciato, effetto anticato

*Powder coated metal frame, antique look*

□ □ □  
30cm 30cm 46cm



1295 - BT03

Struttura in metallo verniciato,  
effetto anticato

*Powder coated metal frame,  
antique look*



30cm 30cm 76cm



W N R Y





1100 - M51

Struttura in metallo verniciato, effetto anticato  
*Powder coated metal frame, antique look*

h A h h   
 85cm 36cm 36cm 45cm

     
 W N R Y



1575 - 36WA

Struttura in metallo verniciato,  
effetto anticato

*Powder coated metal frame,  
antique look*

(L80 x P80 x H75 cm) KD





☐ SEDIA CHAIR  
968 - MC001D

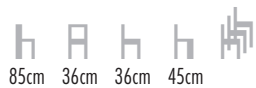


85cm 36cm 36cm 45cm

☐ TAVOLO TABLE  
956 - 36D  
(L82 x P82 x H76 cm) KD

Struttura in metallo verniciato, effetto anticato  
*Metal frame, brush painting, antique look*

1077 - MC001DW  
Struttura in metallo verniciato,  
effetto anticato, seduta in legno  
*Metal frame, brush painting,  
antique look, wood seat*



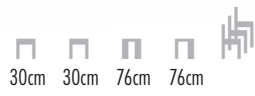
85cm 36cm 36cm 45cm







1061 - MC012D



30cm 30cm 76cm 76cm



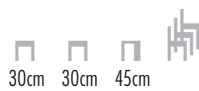
1062 - MC012DT



98cm 30cm 30cm 76cm KD



1263 - 009T



30cm 30cm 45cm

Struttura in metallo verniciato effetto anticato  
*Metal frame, brush painting, antique look*



1079 - MC012DTW

Struttura in metallo verniciato effetto anticato, seduta in legno  
*Metal frame, brush painting, antique look, wood seat*

h A h h KD  
 98cm 30cm 30cm 76cm



1268 - GT28

Struttura in metallo verniciato  
 effetto anticato

*Metal frame, brush painting,  
 antique look*

(L65 x P65 x H107 cm) KD



1078 - MC012DW

Struttura in metallo verniciato  
 effetto anticato, seduta in legno

*Metal frame, brush painting,  
 antique look, wood seat*

h h h h  
 30cm 30cm 76cm



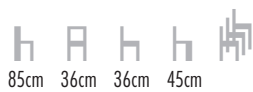
□ SEDIA CHAIR  
969 - MC001T



□ TAVOLO TABLE  
1262 - 236D  
(L80 x P80 x H76 cm) KD

Struttura in metallo verniciato  
con vernice trasparente  
*Powder coated metal frame with varnish*

1066 - MC001TW  
Struttura in metallo verniciato  
con vernice trasparente, seduta in legno  
*Powder coated metal frame,  
with varnish, wood seat*





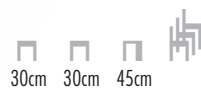
966 - MC012T



1060 - MC012PT



1264 - 010T



Struttura in metallo verniciato con vernice trasparente  
 Powder coated metal frame with varnish



1068 - MC012PTW

Struttura in metallo verniciato con vernice trasparente, seduta in legno

*Powder coated metal frame with varnish, wood seat*





 KD  
 98cm 30cm 30cm 76cm



1267 - GT24

Struttura in metallo verniciato con vernice trasparente

*Powder coated metal frame with varnish*

(L65 x P65 x H107 cm) KD





1067 - MC012TW

Struttura in metallo verniciato con vernice trasparente, seduta in legno

*Powder coated metal frame with varnish, wood seat*




  
 30cm 30cm 76cm



□ SEDIA CHAIR  
1673 - PA1

Struttura in legno  
*Rubber wood frame*




  
 89cm 44cm 43cm 44cm

legno / wood


  
 NO N/M



1674 - PA2

Struttura in legno  
*Rubber wood frame*




  
 89cm 44cm 43cm 44cm

legno / wood


  
 NO N/M



TAVOLO *TABLE*  
715 - SN02

Struttura pieghevole in legno di faggio  
*Beech wood, folding frame*  
(L60 x P80 x H73,5 cm)

SEDIA *CHAIR*  
1912 - SN01

Struttura pieghevole in legno di faggio  
*Beech wood, folding frame*

  
76cm 37,5cm 35cm 45cm

W N G LG R M V NA



545 - DC96

h A h h KD  
94cm 39cm 38cm 65cm

546 - DC97

h A h h KD  
99cm 39cm 38cm 75cm



544 - DC95

h A h h KD  
77cm 47cm 43cm 44cm

Struttura in metallo verniciato, seduta e schienale in legno multistrato

*Powder coated metal frame, plywood seat and backrest*



**I T O**®  
ITALIAN ORIGINAL



083 - AR100

Struttura in metallo verniciato,  
seduta in polipropilene

*Powder coated metal frame,  
polypropylene seat*

h A h h  
88cm 40cm 46cm 46cm

084 - AR38

Struttura in metallo verniciato,  
seduta in polipropilene

*Powder coated metal frame,  
polypropylene seat*

h A h h h  
87cm 40cm 46cm 46cm





1589 - YG103

Struttura in metallo cromato, scocca in polipropilene,  
cuscino in ecopelle

*Chromed metal frame, polypropylene shell,  
synthetic leather pad*

h A h h KD  
76cm 42cm 42cm 45cm

□ ■ ▒  
W N G



1486 - YG91

Struttura in metallo cromato, scocca in polipropilene,  
cuscino in ecopelle

*Chromed metal frame, polypropylene shell,  
synthetic leather pad*

h A h h KD  
77cm 42cm 42cm 45cm

□ ■ ■  
W N G



074 - CT123

Struttura in metallo cromato,  
scocca in polipropilene

*Chromed metal frame,  
polypropylene shell*



82cm 39cm 42,5cm 46cm



587 - AM01

Struttura pieghevole in metallo  
verniciato, seduta e schienale in  
polipropilene

*Powder coated metal foudable  
frame, polypropylene seat and  
backrest*



76cm 38cm 38cm 47cm



**ITD**<sup>®</sup>  
ITALIAN ORIGINAL





1149 - 076

Struttura in metallo cromato,  
scocca in polipropilene, cuscino in ecopelle

*Chromed metal frame,  
polypropylene shell, synthetic leather pad*

h A h h KD  
82cm 48cm 50cm 45cm

**W R N G**



889 - PC492

Struttura in policarbonato

*Polycarbonate frame*

h A h h 

85cm 37cm 38,5cm 48cm



591 - BX10

Struttura in metallo cromato,  
seduta in policarbonato,  
cuscino in ecopelle

*Chroed metal frame,  
polycarbonate seat,  
synthetic leather pad*

h A h h KD

84cm 37cm 39cm 75cm



1259 - M0120C

Struttura in policarbonato

*Polycarbonate frame*



95cm 41cm 45cm 46cm



T W N







1497 - K31

Struttura in legno e metallo verniciato,  
seduta in polipropilene, cuscino in ecopelle

*Powder coated metal and wood frame,  
polypropylene shell, synthetic leather pad*





 KD  
 99cm 39cm 33cm 76cm



  
 W N G



1500 - K32

Struttura in legno,  
seduta in polipropilene,  
cuscino in ecopelle

*Wood frame,  
polypropylene seat,  
synthetic leather pad*

h A h h KD  
85cm 40cm 40cm 76cm

□ ■ ▒  
W N G





1627 - EV36

Struttura in legno di quercia,  
scocca in polipropilene

*Oak wood frame, polypropylene shell*

h A h h KD  
102cm 39cm 34cm 77cm



1639 - EV37

Struttura in legno di quercia,  
scocca in polipropilene, seduta in ecopelle

*Oak wood frame, polypropylene shell,  
synthetic leather pad*

h A h h KD  
110cm 46cm 41cm 74cm





599 - DP3





 KD  
 112cm 44cm 40cm 76cm

Struttura in legno di faggio e metallo verniciato, scocca in polipropilene  
*Powder coated metal and beech wood frame, polypropylene shell*




  
 W N LG SE



□ TAVOLO *BAR TABLE*  
594 - CW1

Struttura in metallo verniciato, piano in MDF  
*Powder coated metal frame, MDF top*  
(Ø60 x H110 cm) KD

□ SGABELLO *BAR STOOL*  
597 - CC1

Struttura in metallo verniciato, seduta in polipropilene con cuscino in ecopelle  
*Powder coated metal frame, polypropylene seat, synthetic leather pad*

h A h h  
85cm 43cm 43cm 75cm



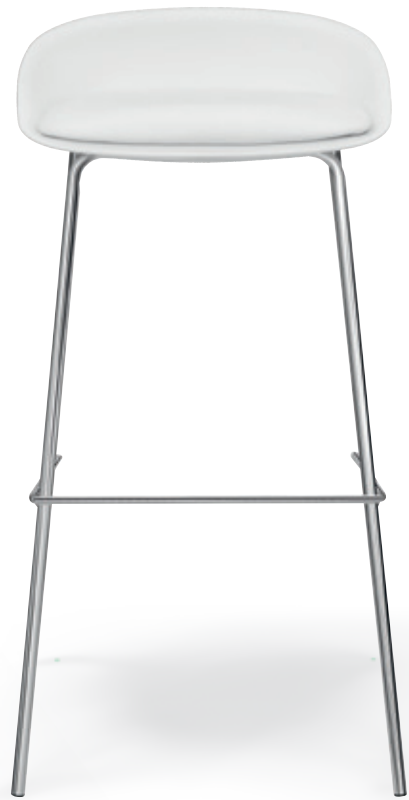
932 - K38

Struttura in metallo cromato,  
scocca in polipropilene

*Chromed metal frame,  
polypropylene shell*

100cm 39cm 34cm 77cm KD





1630 - EV23

Struttura in metallo cromato, seduta in polipropilene, cuscino in ecopelle

*Chromed metal frame, polypropylene seat, synthetic leather pad*



h A h h KD  
87cm 39cm 39cm 77cm



W N R G



933 - K08

Struttura in metallo cromato,  
scocca in polipropilene

*Chromed metal frame,  
polypropylene shell*

h A h h KD  
104/83cm 39cm 34cm 81/60cm







997 - K3001

Struttura in metallo cromato,  
scocca in polipropilene,  
cuscino in ecopelle

*Chromed metal frame,  
polypropylene shell,  
synthetic leather pad*

h A h h KD  
107/86cm 41cm 37cm 81/60cm



W N R A V G



1031 - 795

Struttura in metallo verniciato,  
scocca in polipropilene

*Powder coated metal frame,  
polypropylene shell*

h A h h KD  
94/73 cm 39cm 34cm 78/57cm



Struttura in metallo cromato, seduta e schienale in ecopelle  
*Chromed metal frame, seat and backrest in synthetic leather*



1113 - BY035

h A h h KD  
108/86cm 37cm 32cm 80/58cm



602 - XH2

Struttura in metallo verniciato,  
seduta imbottita rivestita in ecopelle

*Powder coated metal frame,  
padded seat, synthetic leather  
covering*

h A h h KD  
88/68 cm 40cm 36cm 77/57cm



DG

DM



LM

M



604 - XH9

Struttura in metallo verniciato,  
seduta imbottita rivestita in ecopelle

*Powder coated metal frame,  
padded shell, synthetic leather  
covering*

h A h h KD  
108/88cm 38cm 35cm 78/58cm



□ TAVOLO TABLE  
224 - TB009

Struttura in acciaio cromato,  
piedini regolabili, piano in poliestere  
*Chromed steel frame,  
polyester top*  
(Ø 76 cm, H 106 cm)



245 - B030

Struttura in metallo cromato, seduta girevole in ecopelle  
*Chromed metal frame, swivel seat, synthetic leather seat and backrest*

h h h KD  
107,5cm 38cm 76cm





593 - C2842

Struttura in metallo cromato,  
seduta e schienale in ecopelle

*Chromed metal frame,  
synthetic leather seat and back*

h A h h KD  
85cm 45cm 53cm 46cm

■ ■ ■  
N R V



605 - ZWH1

609 - ZW2


 KD  
 108/102cm 51cm 45cm 51/45cm

Struttura in metallo cromato, seduta imbottita, rivestita in ecopelle  
 Chromed metal frame, padded seat, synthetic leather covering


 KD  
 93/87cm 51cm 45cm 51/45cm



629 - ZW5

Struttura in metallo cromato, seduta imbottita,  
rivestita in ecopelle

*Chromed metal frame, padded seat,  
synthetic leather covering*





 KD  
 87,5cm 51cm 45cm 47cm



W

N




610 - ZWH3

 KD  
 108/102cm 51cm 45cm 51/45cm

Struttura in metallo cromato, seduta imbottita,  
 rivestita in ecopelle, schienale in textilene  
*Chromed metal frame, padded seat, synthetic  
 leather covering, textilene backrest*

612 - ZW4

 KD  
 93/87cm 51cm 45cm 51/45cm





605 - ZWH1




609 - ZW2





 KD  
 108/102cm 51cm 45cm 51/45cm

Struttura in metallo cromato, seduta imbottita, rivestita in ecopelle  
*Chromed metal frame, padded seat, synthetic leather covering*





 KD  
 93/87cm 51cm 45cm 51/45cm



1237 - HM2

h A h h KD  
111/105cm 50cm 43cm 50/44cm

1238 - MM2

h A h h KD  
95/89cm 58cm 59cm 50/44cm

1239 - VM2

h A h h KD  
94cm 57cm 56cm 46cm

W N

Struttura in alluminio e acciaio cromato, rivestimento in textilene / Aluminum and chromed iron frame, textilene covering



1234 - HL1

h A h h KD  
111/105cm 50cm 43cm 50/44cm

1235 - ML1

h A h h KD  
95/89cm 50cm 43cm 50/44cm

1236 - VL1

h A h h KD  
94cm 50cm 43cm 46cm



Struttura in alluminio e acciaio cromato, rivestimento in ecopelle / Aluminum and chromed iron frame, synthetic leather covering



529 - W81

Struttura in nylon con fibra di vetro,  
base in alluminio cromata, seduta in tessuto,  
schienale in textilene,  
6 possibilità di regolazione

*Nylon frame with fiberglass,  
chromed aluminum base,  
fabric seat, textylene backrest,  
6 positions of adjustment*

h A h h  
98,5/90cm 51,5cm 50cm 51,5/43cm





671 - W03

Base cromata, rivestimento in  
textilene ed ecopelle

*Chromed metal base, synthetic  
leather and mesh fabric  
upholstery*

h A h h  
115/107cm 61cm 63cm 52/45cm



606 - W94

Struttura in nylon con fibra di vetro,  
base cromata, seduta in tessuto,  
schienale in textilene,  
8 possibilità di regolazione

*Nylon frame with fiberglass, chromed base,  
fabric seat, textylene backrest,  
8 positions of adjustment*

h A h h  
122/113cm 51,5cm 50cm 52/43cm



666 - CW13

Struttura in metallo verniciato,  
piano e cassetto in MDF  
impiallacciato

*Powder coated metal frame,  
veneered MDF  
top and drawer*

(L118 x P60 x H77 cm)



1628 - EV11

Struttura in metallo verniciato,  
scocca in polipropilene

*Powder coated metal frame,  
polypropylene shell*

h A h h KD  
86/93cm 44cm 37cm 47/54cm

□ ■  
W N





1491 - YG98

Struttura in metallo cromato,  
scocca in polipropilene, cuscino in ecopelle

*Chromed metal frame,  
polypropylene shell, synthetic leather pad*

h A h h KD  
81/76cm 42cm 42cm 50/45cm

scocca / shell





669 - WX910

Struttura in metallo cromato,  
seduta e schienale in ecopelle

*Chromed metal frame,  
synthetic leather seat and backrest*

h A h h KD  
92/84cm 49cm 57cm 50/42cm







1126 - K03

Struttura in metallo cromato, scocca in polipropilene, cuscino in ecopelle  
*Chromed metal frame, polypropylene shell, synthetic leather pad*

h A h h KD  
 90/78cm 39cm 43cm 54/42cm

W N R Y G V



620 - X17PS

Struttura in acciaio inox,  
rivestimento in ecopelle

*Stainless steel frame,  
synthetic leather covering*

(L76 x P70 x H68 cm)



W

N



619 - X17D2S

Struttura in acciaio inox, rivestimento in ecopelle

*Stainless steel frame, synthetic leather covering*

(L130 x P70 x H68 cm)



W

N





1653 - B01T

Struttura in metallo cromato, piano in vetro temperato  
*Chromed metal frame, tempered glass top*  
 (L60 x P60 x H45 cm)



618 - X17D3S

Struttura in acciaio inox, rivestimento in ecopelle  
*Stainless steel frame, synthetic leather covering*  
 (L180 x P70 x H68 cm)





1797 - HKP2

Struttura in metallo ottonato, rivestimento in velluto

*Metal frame, gold effect, velvet covering*

(L76 x P67 x H71 cm)



VI



B



**I T O**  
ITALIAN DESIGN



1604 - 06S

Struttura in metallo verniciato,  
rivestimento in tessuto

*Powder coated metal frame,  
fabric covering*

(L123 x P50 x H77 cm)



G

B

A

Y

LR

V

**I T O**  
ITALIAN DESIGN



1605 - 06P

Struttura in metallo verniciato,  
rivestimento in tessuto

*Powder coated metal frame,  
fabric covering*

(L64 x P50 x H77 cm)



G



B



A



Y



LR



V



1603 - 06T

Struttura in metallo verniciato,  
rivestimento in tessuto

*Powder coated metal frame,  
fabric covering*

(L63 x P47 x H37 cm)



G



B



A



Y



LR



V





1774 - S03

Struttura in metallo verniciato,  
rivestimento in tessuto

*Powder coated metal frame,  
fabric covering*



  
 42cm 42cm 45cm



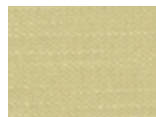
G



B



A



Y



LR



V



1659 - DA1

Base in metallo verniciato, scocca imbottita rivestita in tessuto

Powder coated metal base, padded shell, fabric covering (L60 x P47 x H102 cm)





733 - DA3  
 Base in metallo cromato,  
 scocca imbottita  
 rivestita in tessuto  
*Chromed metal base,  
 padded shell, fabric covering*  
 (L60 x P47 x H102 cm)



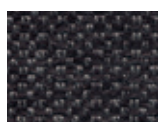
050 - DA2  
 Base in metallo verniciato,  
 scocca imbottita  
 rivestita in tessuto  
*Powder coated metal base,  
 padded shell, fabric covering*  
 (L60 x P47 x H102 cm)



G



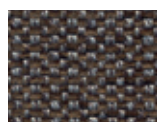
LB



N



V



GM



DB



1520 - S8V

Struttura in metallo verniciato, rivestimento in tessuto o in ecopelle

*Powder coated metal frame, fabric or synthetic leather covering*

(L59 x P53 x H76 cm)



tessuto / fabric



N



LG



B



V



1678 - SE10

Struttura in metallo verniciato, piano in MDF verniciato

*Powder coated metal frame painted, MDF top*

(L74,5 x P49,5 x H42,5 cm)

piano / top



1681 - SE02

(L92 x P50 x H40,5 cm)

672 - SE04

(L130 x P57 x H40,5 cm)

Struttura in metallo verniciato, piano MDF verniciato

*Powder coated metal frame painted, MDF top*

piano / top





685 - WD5  
(Ø60 x H53,5 cm)

Struttura in metallo verniciato, piano in MDF impiallacciato  
*Powder coated metal frame, veneered MDF top*

683 - WD4  
(Ø70 x H42,5 cm)



687 - WD7  
(L112 x P89 x H32 cm)

Struttura in metallo verniciato, piano in MDF impiallacciato  
*Powder coated metal frame, veneered MDF top*

686 - WD  
(L63 x P53 x H39 cm)



682 - WD3  
(L60 x P60 x H33 cm)



Struttura in metallo verniciato, piano in laminato  
*Powder coated metal frame painted, laminated top*





673 - WD1  
(L140 x P80 x H40 cm)



674 - WD2  
(L50 x P50 x H50 cm)

Struttura in metallo verniciato, piano in MDF impiallacciato  
*Powder coated metal frame painted, veneered MDF top*





1611 - TOP4

Struttura in metallo verniciato, piano in MDF impiallacciato noce  
*Powder coated metal frame, walnut veneered MDF top*  
(L80 x P80 x H47 cm)



1619 - TOP12

Struttura in metallo verniciato, piano in MDF impiallacciato noce  
*Powder coated metal frame, walnut veneered MDF top*  
(L120 x P60 x H35 cm)

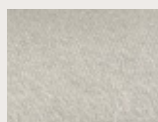


1713 - DK70

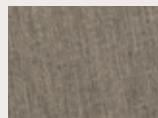
Struttura in legno,  
rivestimento in tessuto

*Wood frame,  
fabric covering*

 KD  
86cm 53cm 46cm 47cm



BE



M



PE



N



A



V





1712 - DK65

Struttura in legno, rivestimento in tessuto

Wood frame, fabric covering





 KD  
 79cm 54cm 45cm 44cm



B



V



LG



PE



1858 - RE10  
(L120 x P45 x H86 cm)



1859 - RE11  
(L60 x P45 x H86 cm)



1860 - RE12  
(L45 x P45 x H86 cm)

Struttura in legno, rivestimento in ecopelle o tessuto  
*Wood frame, synthetic leather or fabric covering*

Ecopelle, tessuto, base e misure possono essere personalizzate  
*Synthetic leather, fabric, base and sizes can be customized*



1852 - RE04  
(L120 x P45 x H101 cm)



1853 - RE05  
(L60 x P45 x H101 cm)



1854 - RE06  
(L45 x P45 x H101 cm)

Struttura in legno, rivestimento in ecopelle o tessuto  
*Wood frame, synthetic leather or fabric covering*

Ecopelle, tessuto, base e misure possono essere personalizzate  
*Synthetic leather, fabric, base and sizes can be customized*



1951 - RE13  
 (L120 x P45 x H101 cm)



1952 - RE14  
 (L60 x P45 x H101 cm)



1953 - RE15  
 (L45 x P45 x H101 cm)

Struttura in legno, rivestimento in ecopelle o tessuto  
 Wood frame, synthetic leather or fabric covering

Ecopelle, tessuto, base e misure possono essere personalizzate  
 Synthetic leather, fabric, base and sizes can be customized



1855 - RE07  
(L120 x P45 x H101 cm)



1856 - RE08  
(L60 x P45 x H101 cm)



1857 - RE09  
(L45 x P45 x H101 cm)

Struttura in legno, rivestimento in ecopelle o tessuto  
*Wood frame, synthetic leather or fabric covering*

Ecopelle, tessuto, base e misure possono essere personalizzate  
*Synthetic leather, fabric, base and sizes can be customized*



1849 - RE01  
 (L120 x P45 x H130 cm)



1850 - RE02  
 (L60 x P45 x H130 cm)



1851 - RE03  
 (L45 x P45 x H130 cm)

Struttura in legno, rivestimento in ecopelle o tessuto  
*Wood frame, synthetic leather or fabric covering*

Ecopelle, tessuto, base e misure possono essere personalizzate  
*Synthetic leather, fabric, base and sizes can be customized*



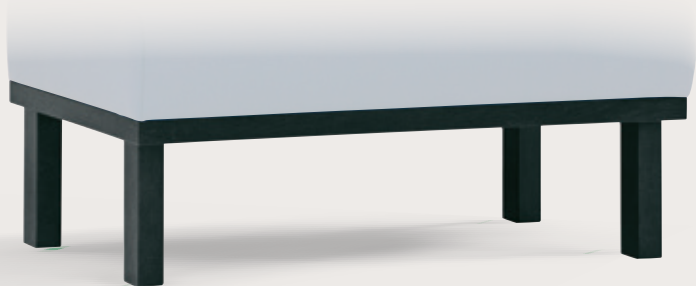
FINITURE BASI BASE FINISHES



Base (A)

Rivestimento in laminato,  
colore a richiesta

*Laminate coating, color on request*



Base (B)

Struttura a vista in legno con gambe  
quadrate in legno, colore a richiesta

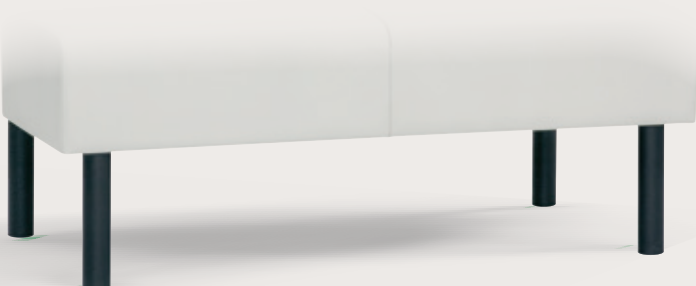
*Visible wooden structure with square  
wooden legs, color on request*



Base (C)

Gambe in legno rettangolari,  
colore a richiesta

*Rectangular wooden legs,  
color on request*



Base (D)

Gambe rotonde in metallo,  
colore a richiesta

*Round metal legs, color on request*



☐ POLTRONCINA *ARMCHAIR*  
1902 - RD01



☐ TAVOLO *TABLE*  
1922 - ZL02  
(L70 x P70 x H77 cm) KD  
1921 - ZL01  
(L80 x P80 x H77 cm) KD

Struttura in metallo verniciato,  
piano in melamina

*Powder coated metal frame,  
melamine top*





1966 - TB9



1967 - TB10



1968 - TB11



1969 - TB12



1962 - TB5



1963 - TB6



1964 - TB7



1965 - TB8



1958 - TB1



1959 - TB2



1960 - TB3



1961 - TB4



537 - CS205  
(Ø 70 x H75 cm)



1840 - BT2G  
(Ø 60 x H110 cm)



538 - CS206  
(70 x 70 x H 75 cm)

621 - CS207  
(80 x 80 x H 75 cm)

Struttura in acciaio inox cromato, piedini regolabili  
piano in vetro temperato spessore 12 mm  
*Chromed stainless steel frame,  
12 mm tempered glass, adjustable feet*



1770 - F39G  
(70 x 70 x H 75 cm)

1956 - F40G  
(80 x 80 x H 75 cm)



1768 - F43G  
(Ø 60 cm H 75 cm)

Struttura in acciaio inox ottonato, piano in vetro temperato, spessore 12 mm  
*Metal frame, gold effect, 12 mm tempered glass top*



1771 - F39B  
(70 x 70 x H 75 cm)

1957 - F40B  
(80 x 80 x H 75 cm)



1769 - F43B  
(Ø 60 cm H 75 cm)

Struttura in acciaio inox in ottone satinato, piedini regolabili, piano in vetro temperato, spessore 12 mm  
*Stainless steel frame, satin gold effect, 12 mm tempered glass top, adjustable feet*



938 - K54 (L80 x P80 x H74 cm)

939 - K55 (L120 x P80 x H74 cm)

Struttura in metallo, gambe in legno di faggio,  
piano in MDF laccato

*Powder coated metal frame,  
beech solid wood legs, painted MDF top*

piano / top



W

N

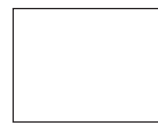




841 - RF22

Struttura in metallo verniciato, piano allungabile in cristallo spessore 8 mm

*Powder coated metal frame, 8 mm tempered glass top and extension*  
(100/160 x 70 x 76/45 cm)



W



G







TAVOLO *TABLE*

689 - TF23

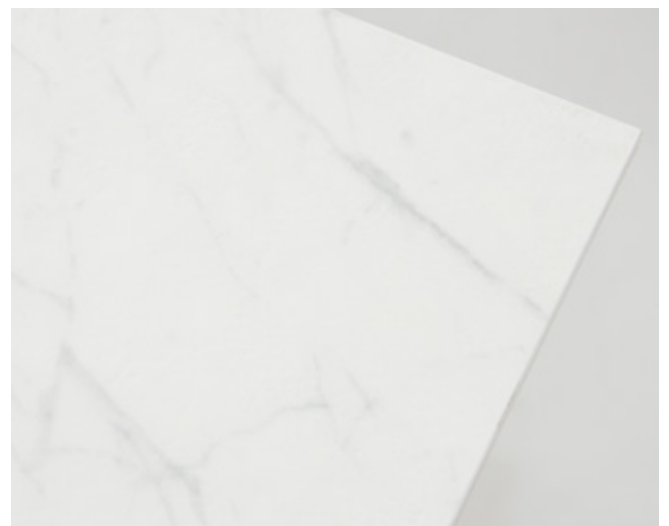
Struttura in metallo verniciato,  
piano allungabile in vetroceramica spessore  
13,5 mm

*Powder coated metal frame,  
13,5 mm tempered glass and ceramic, top  
and extension*

(L160+40+40 x P90 x H75 cm)

SEDIA *CHAIR* - pg. 146

1615 - TOP8





□ TAVOLO *TABLE*  
1665 - TF22

Struttura in metallo verniciato, piano allungabile in cristallo e melamina antigraffio spessore 11 mm  
*Powder coated metal frame, 11 mm tempered glass and scratchproof melamine top and extension*  
(L160/+40+40 x P90 x H75 cm) KD



□ SEDIA CHAIR - pg. 160  
1803 - DC81





□ TAVOLO *TABLE*  
1737 - DT45

Struttura in metallo verniciato,  
piano in vetroceramica spessore 11 mm  
*Powder coated metal frame,  
11 mm tempered glass and ceramic top*

(L200 x P100 x H75 cm) KD

□ POLTRONCINA *ARMCHAIR* - pg. 143  
1939 - UK02









☐ SEDIA CHAIR - pg. 160  
1803 - DC81

☐ TAVOLO TABLE  
1694 - DE93T

Struttura in metallo verniciato, piano allungabile in vetroceramica spessore 13,5 mm  
*Powder coated metal frame, 13,5 mm tempered glass and ceramic top and extension*

(L160/+40+40 x P90 x H76 cm) KD



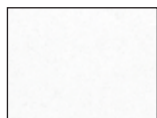
□ TAVOLO TABLE  
1442 - A58

Struttura in metallo verniciato, piano allungabile in cristallo spessore 10 mm  
*Powder coated metal frame, 10 mm tempered glass top and extension*  
(L180/220 x P90 x H76 cm) KD

□ SEDIA CHAIR - pg. 144  
1615 - TOP8



struttura / frame



W



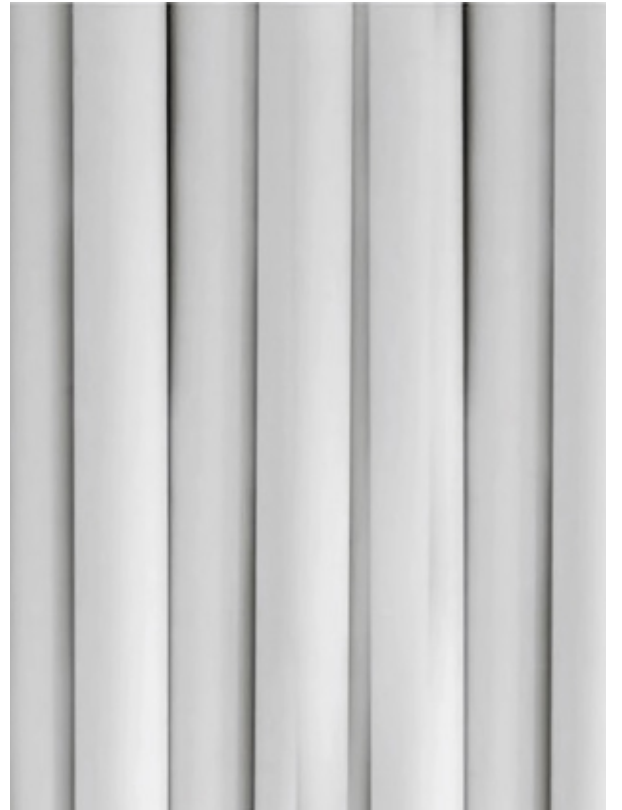
G9



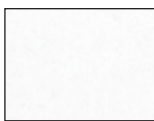
TAVOLO *TABLE*  
1442 - A58

Struttura in metallo verniciato, piano allungabile in cristallo spessore 10 mm  
*Powder coated metal frame, 10 mm tempered glass top and extension*  
(L180/220 x P90 x H76 cm) KD

SEDIA *CHAIR* - pg. 152  
1528 - T07



struttura / frame



W



G9



□ TAVOLO *TABLE*  
1594 - DE86T

Struttura in metallo verniciato, piano allungabile in vetroceramica spessore 11 mm, estensione in MDF laccata  
*Powder coated metal frame, 11 mm tempered glass and ceramic top, high gloss MDF extension*  
(Ø 120+50 x H76 cm) KD



□ SEDIA CHAIR - pg 146  
1615 - TOP8







TAVOLO *TABLE*  
1608 - TOP1

Struttura in metallo verniciato, gambe in legno,  
piano allungabile in vetroceramica spessore 11 mm

*Powder coated metal frame, solid wood legs,  
11 mm tempered glass and ceramic top and extension*  
(L180/230 x P90 x H75 cm) KD

SEDIA *CHAIR* - pg. 158  
1927 - TD03





SEDIA CHAIR - pg. 162  
821 - RF49C

TAVOLO TABLE  
1609 - TOP2

Struttura in alluminio, gambe in legno, piano allungabile in cristallo spessore 10 mm  
*Aluminum frame, solid wood legs, 10 mm tempered glass top*  
(L160/+40+40 x P90 x H75 cm) KD





□ TAVOLO TABLE  
1324 - A75

Struttura in metallo verniciato, gambe in legno di faggio, piano allungabile in MDF verniciato effetto pietra  
*Powder coated metal frame beech, wood legs, MDF top and extension painted in stone color*  
(L160/220 x P90 x H76 cm) KD

□ POLTRONCINA ARMCHAIR - pg. 171  
1523 - D23





□ TAVOLO TABLE  
1445 - A75G

Struttura in metallo verniciato, gambe in legno, piano allungabile in cristallo spessore 10,5 mm  
*Powder coated metal frame, wood legs, 10,5 mm tempered stoneglass top and extension*  
(L140/200 x P80 x H76 cm)

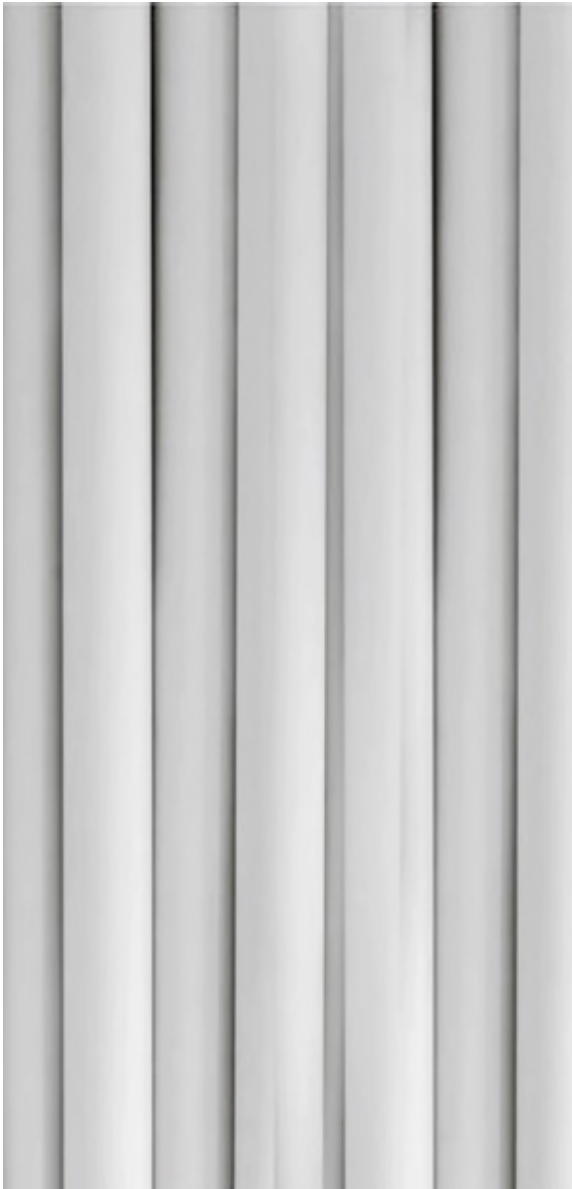
□ POLTRONCINA ARMCHAIR - pg. 118  
1904 - RD03



POLTRONCINA *ARMCHAIR* - pg. 171  
1523 - D223

SEDIA *CHAIR* - pg. 171  
1524 - D22









- TAVOLO TABLE  
1801 - MT49

Struttura in legno massello, piano in MDF impiallacciato  
*Solid rubber wood frame, MDF veneer top*  
(L160 x P90 x H75 cm)

- POLTRONCINA ARMCHAIR - pg. 118  
1904 - RD03



TAVOLO *TABLE*  
1677 - MIT10

Struttura in metallo verniciato, piano in MDF impiallacciato  
*Powder coated metal frame, MDF top with ash veneer*  
(Ø 137 x H76 cm)

POLTRONCINA *ARMCHAIR* - pg. 149  
1904 - RD03





□ TAVOLO TABLE  
1676 - MIT67

□ POLTRONCINA ARMCHAIR - pg. 148  
1954 - E14

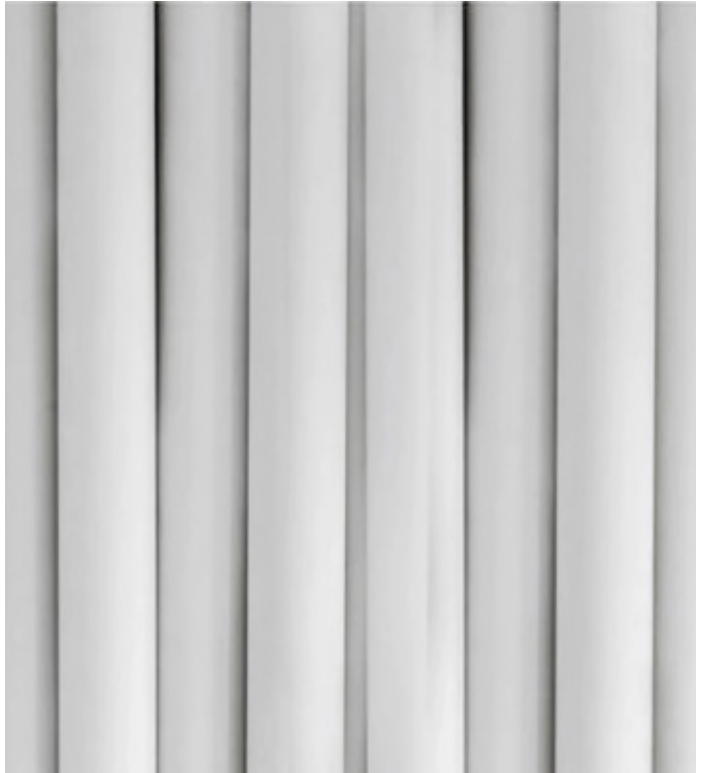
Struttura in metallo verniciato, piano in marmo sintetico  
*Powder coated metal frame, synthetic marble top*

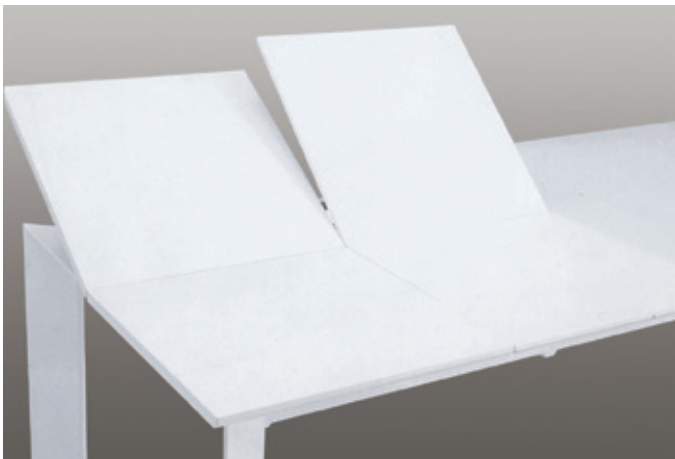
(Ø 135 x H75 cm)

marmo / marble



W N





□ SEDIA CHAIR - pg. 166  
1456 - 30D

□ TAVOLO TABLE  
1450 - 28DT

Struttura in metallo verniciato, piano allungabile in cristallo spessore 8 mm, estensione in MDF laccata

*Powder coated metal frame, 8 mm tempered glass top, extension in MDF painting*

(L140/+45+45 x P90 x H76 cm)



*cristallo / tempered glass*



W



G9G

*struttura & MDF / frame & MDF*



W

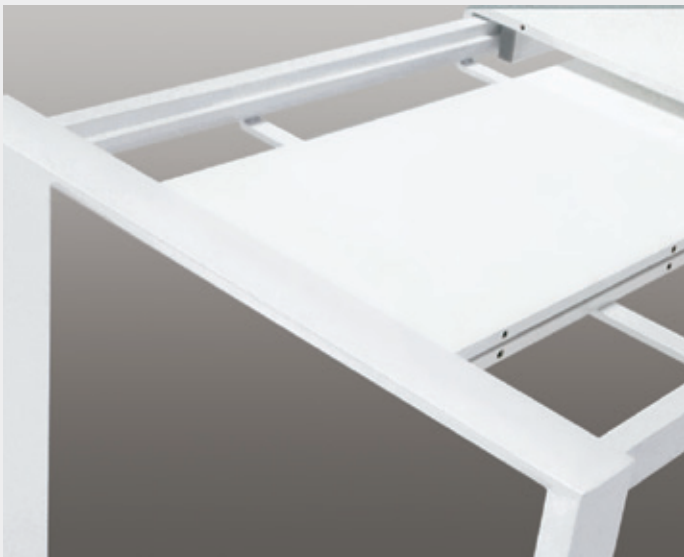


G9









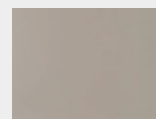
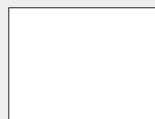
SEDIA CHAIR - pg. 183  
464 - V11

TAVOLO TABLE  
1457 - 65DT

Struttura in metallo verniciato, piano allungabile in MDF laccato  
*Powder coated metal frame, top and extension in high gloss MDF*  
(L130/+40+40 x P80 x H76 cm)

piano MDF / MDF top

struttura / frame



W

G9G

W

G9



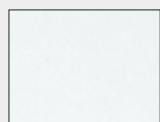


SEDIA *CHAIR* - pg. 88  
1893 - DH01

TAVOLO *TABLE*  
1460 - 78DT

Struttura in metallo verniciato, piano allungabile in cristallo spessore 8 mm  
*Powder coated metal frame, 8 mm tempered glass top and extension*  
(L120/+45+45 x P86 x H75 cm)

cristallo / *tempered glass*

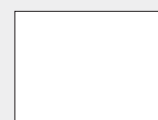


W



G10G

struttura / *frame*

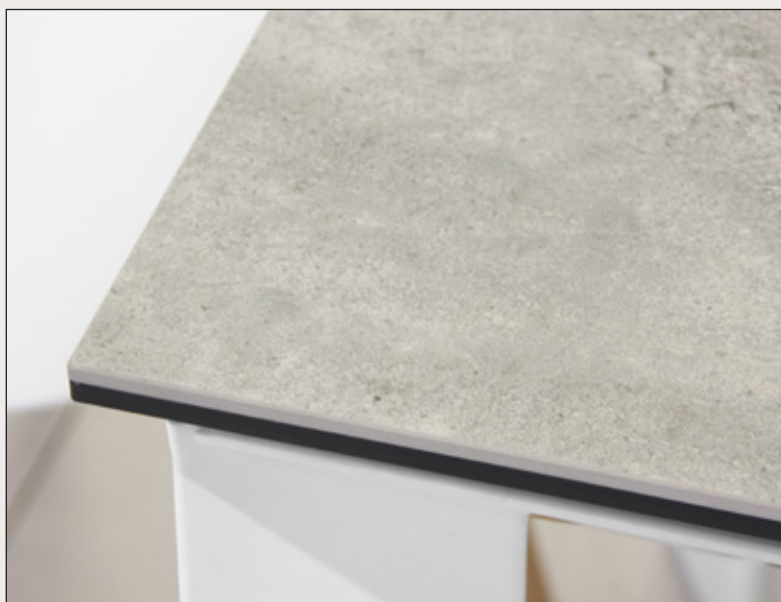


W



G10





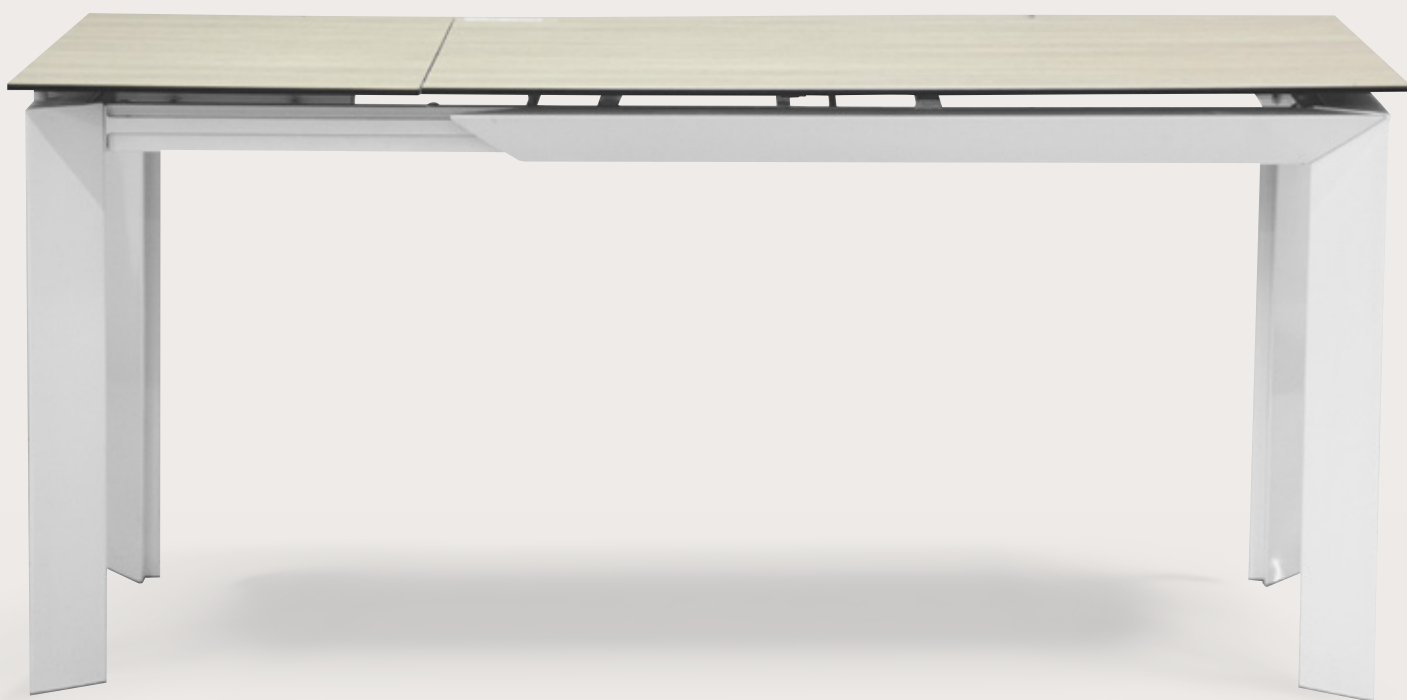
TAVOLO TABLE  
1466 - 73DTM

Struttura in metallo verniciato,  
piano allungabile in vetroceramica  
temperato spessore 11,5 mm

*Powder coated metal frame,  
11,5 mm ceramic tempered  
glass top and extension  
(L120/170 x P80 x H76 cm)*

SEDIA CHAIR - pg. 183  
464 - V11





□ TAVOLO TABLE  
1467 - 73DTN

Struttura in metallo verniciato, piano allungabile  
in vetro-melamina temperato resistente al fuoco  
spessore 8,5 mm

*Powder coated metal frame,  
8,5 mm melamine tempered  
glass top and extension, fire resistant  
(L120/170 x P80 x H76 cm)*

□ SEDIA CHAIR - pg. 68  
451 - P82



**Interno**

***Indoor***



**Basi & piani  
per tavoli**

***Table bases  
& tops***



1648 - EG3  
 Struttura in acciaio inox ottonato  
*Stainless steel frame, gold effect*  
 (52 x 52 x H72 cm) kg 3,7



1647 - EC1  
 Struttura in acciaio inox cromato  
*Chromed stainless steel frame*  
 (52 x 52 x H72 cm) kg 3,7



1839 - EP1  
 Struttura in acciaio inox verniciato  
*Powder coated stainless steel frame*  
 (L52 x P52 x H72 cm) kg 3,7





980 - TB015S (L80 x P80 x H72,5 cm) KD

986 - TB016S (L120 x P80 x H72,5 cm) KD

Struttura in metallo cromato

*Chromed metal frame*



988 - TB015V (L80 x P80 x H72,5 cm) KD

987 - TB016V (L120 x P80 x H72,5 cm) KD

Struttura in metallo verniciato

*Powder coated metal frame*



□ STRUTTURA *FRAME*

530 - LX188  
(L80 x P80 x H74,5 cm) KD

532 - LX288  
(L120 x P80 x H74,5 cm) KD

533 - LX388  
(L160 x P80 x H74,5 cm) KD

534 - LX488  
(L180 x P90 x H74,5 cm) KD

Struttura in alluminio verniciato  
*Powder coated aluminum frame*





□ STRUTTURA FRAME

517 - LX191  
(L80 x P80 x H73,5 cm) KD

518 - LX291  
(L120 x P80 x H73,5 cm) KD

519 - LX391  
(L160 x P80 x H73,5 cm) KD

527 - LX491  
(L180 x P90 x H73,5 cm) KD

Struttura in alluminio verniciato  
Powder coated aluminum frame



W

N

G



□ STRUTTURA FRAME

506 - LX194  
(L80 x P80 x H72,5 cm) KD

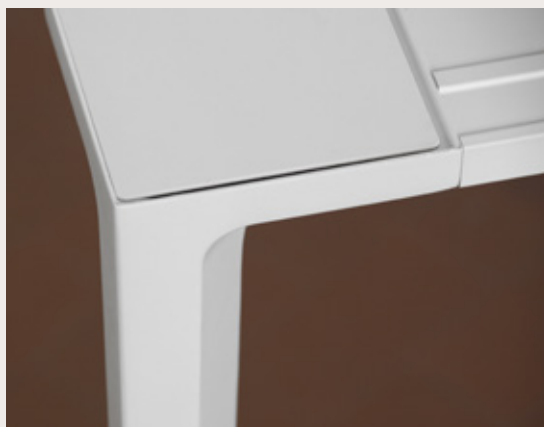
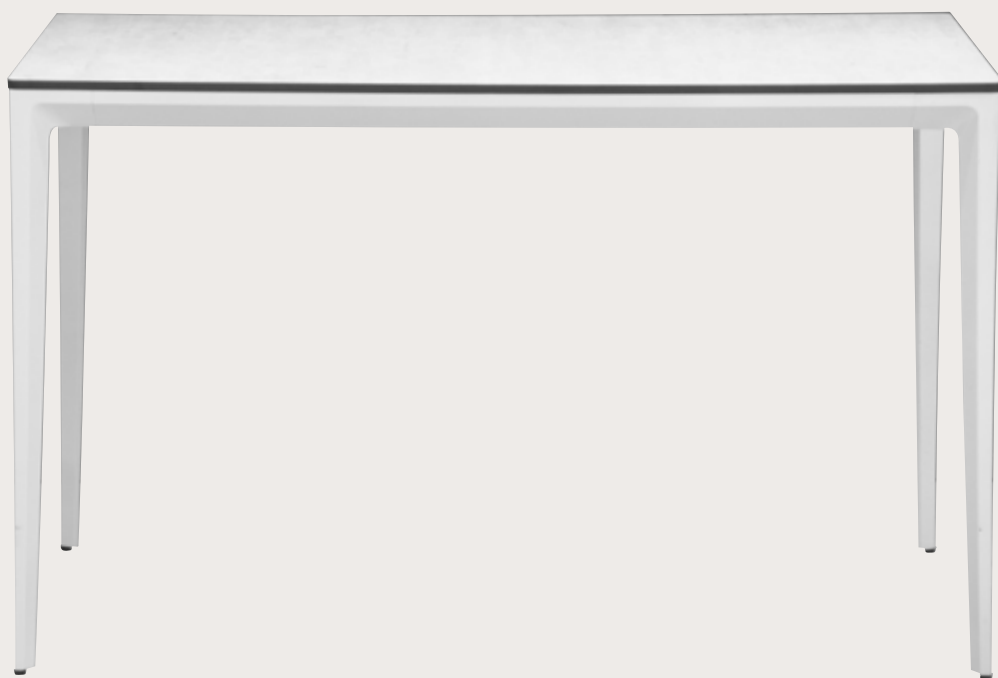
514 - LX294  
(L120 x P80 x H72,5 cm) KD

515 - LX394  
(L160 x P80 x H72,5 cm) KD

516 - LX494  
(L180 x P90 x H72,5 cm) KD

Struttura in alluminio verniciato  
Powder coated aluminum frame





□ STRUTTURA *FRAME*

500 - LX192  
(L80 x P80 x H72,5 cm) KD

501 - LX292  
(L120 x P80 x H72,5 cm) KD

502 - LX392  
(L160 x P80 x H72,5 cm) KD

503 - LX192  
(L180 x P90 x H72,5 cm) KD

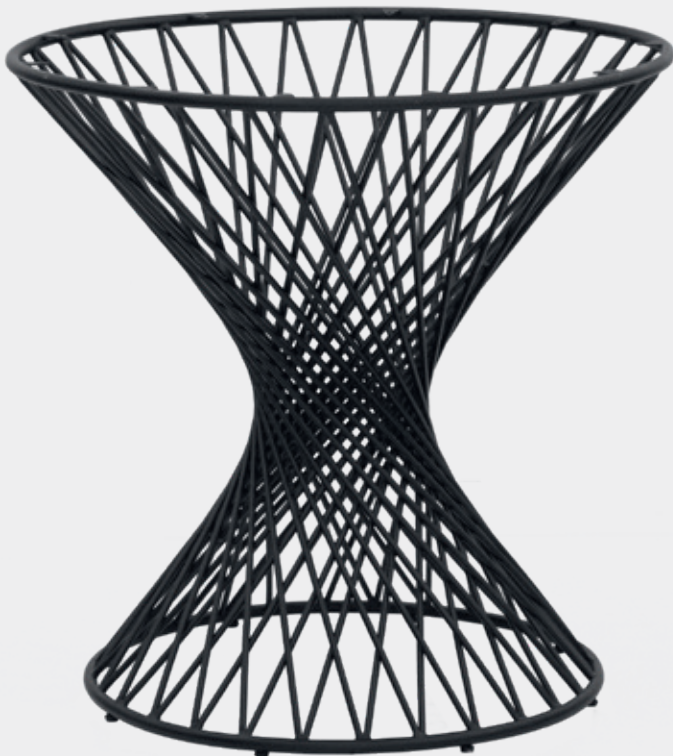
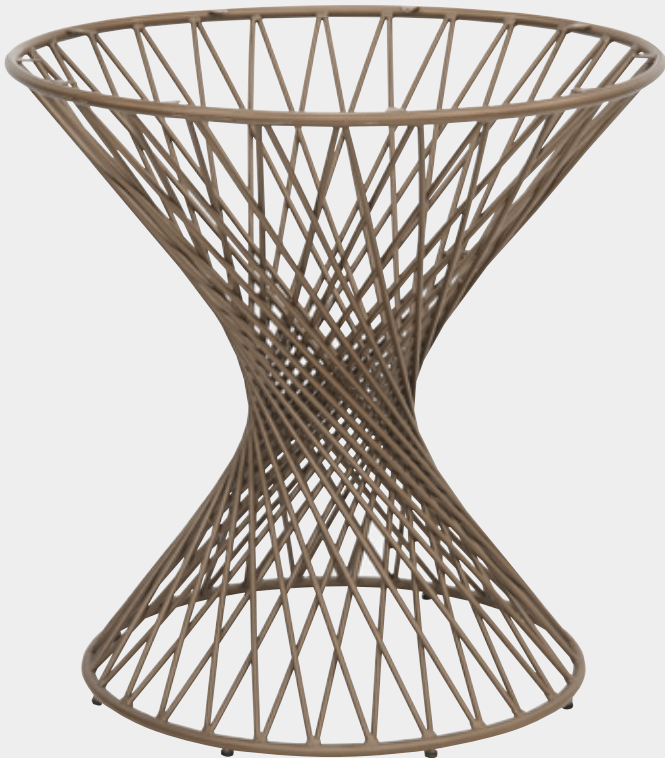
Struttura in alluminio verniciato  
*Powder coated aluminum frame*



W N G







1985 - MB01

Base in metallo verniciato

*Powder coated metal base*

(Ø 75 x H74,5 cm) kg 22,4



W

N

BR



494 - FN1  
(Ø 51 x H71 cm)

495 - FN2  
(Ø 60 x H71 cm)

Struttura in metallo verniciato  
*Powder coated metal frame*



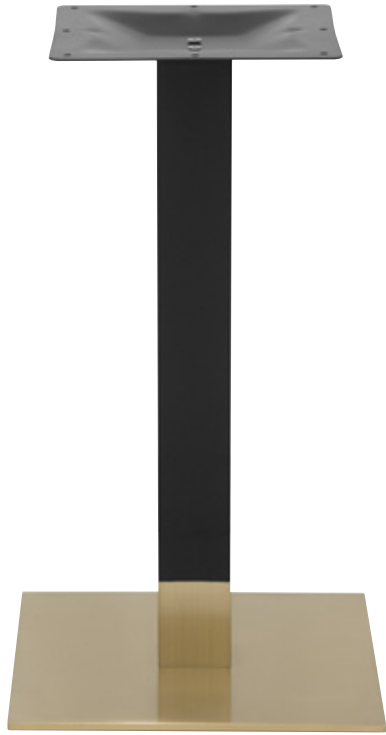


496 - FN3  
(Ø 51 x H71 cm)

497 - FN4  
(Ø 60 x H71 cm)

Struttura in acciaio inox  
*Stainless steel frame*





485 - EB1

Struttura in acciaio inox, tubo nero,  
base ottone satinato, piedini regolabili

*Stainless steel frame, black tube,  
base in satin brass colour, adjustable feet*

(40 x 40 x H72 cm) kg 14 KD

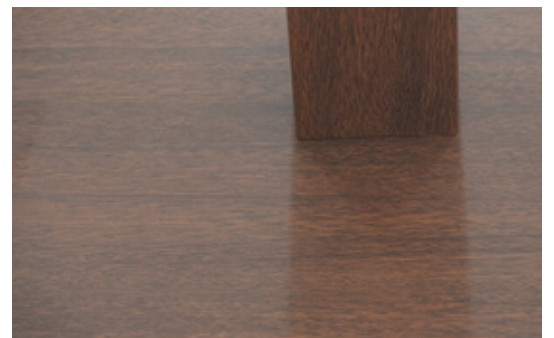


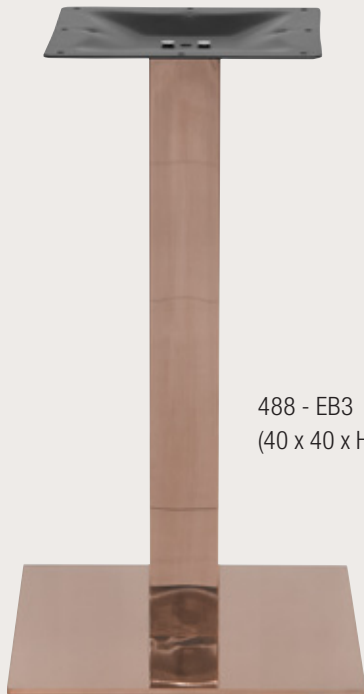
486 - EB2

Struttura in acciaio verniciata,  
effetto legno, piedini regolabili

*Steel frame, wood effect,  
adjustable feet*

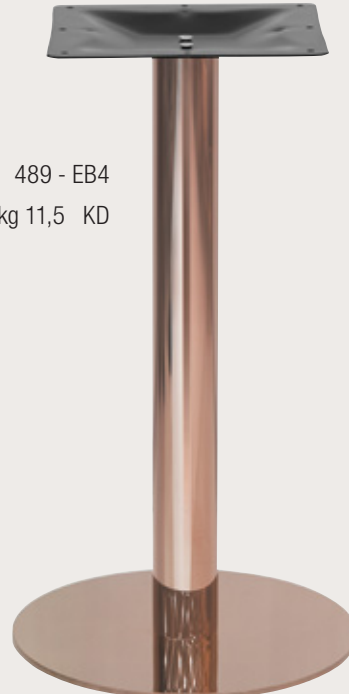
(40 x 40 x H72 cm) kg 14 KD



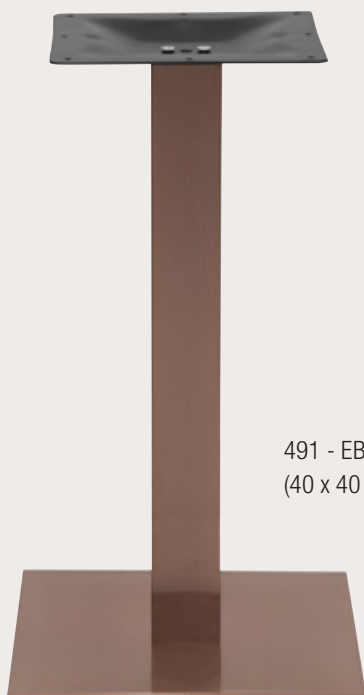


488 - EB3  
(40 x 40 x H72 cm) kg 14 KD

489 - EB4  
(Ø 40 x H72 cm) kg 11,5 KD



Struttura in acciaio inox ramato, piedini regolabili / *Stainless steel frame, copper effect, adjustable feet*



491 - EB4  
(40 x 40 x H72 cm) kg 14 KD

492 - EB6  
(Ø 40 x H72 cm) kg 11,5 KD



Struttura in acciaio inox rame satinato, piedini regolabili / *Stainless steel frame, satin copper, adjustable feet*



1646 - EG2  
(Ø 40 x H72 cm) kg 11,5 KD

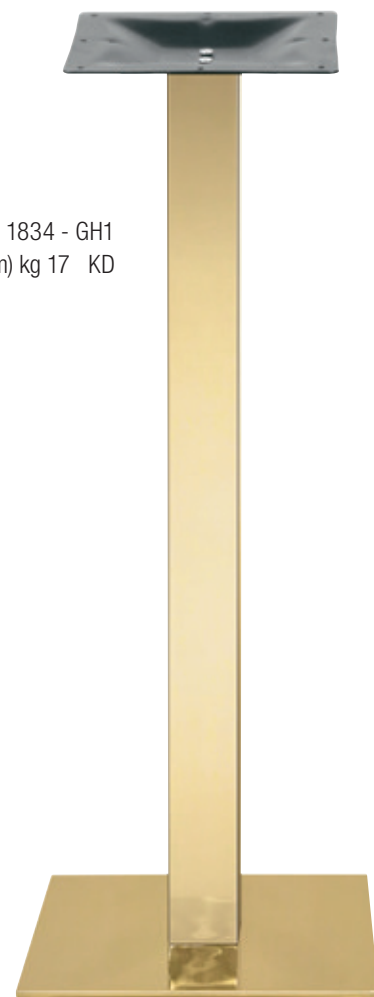


1645 - EG1  
(40 x 40 x H72 cm) kg 14 KD

Struttura in acciaio inox ottonato, piedini regolabili / *Stainless steel frame, gold effect, adjustable feet*



1833 - GH2  
(Ø 40 x H110 cm) kg 13,5 KD

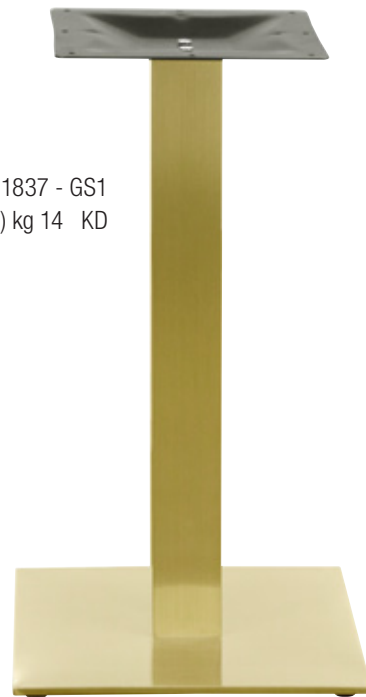


1834 - GH1  
(40 x 40 x H110 cm) kg 17 KD



1835 - GS2  
(Ø 40 x H72 cm) kg 11,5 KD

1837 - GS1  
(40 x 40 x H72 cm) kg 14 KD

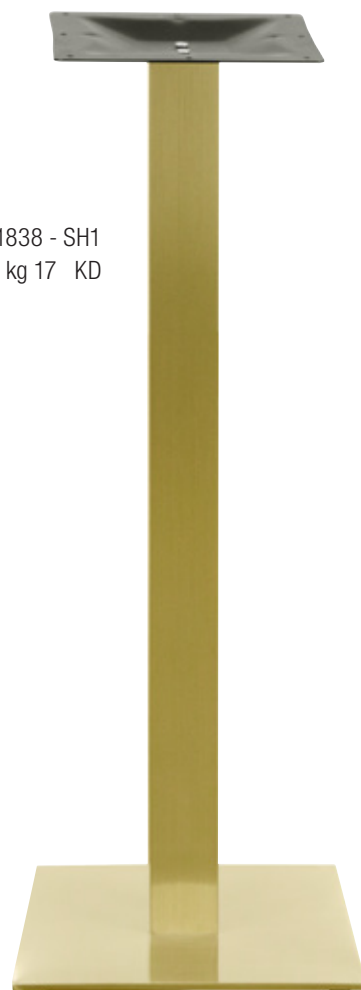


Struttura in acciaio inox effetto ottone satinato, piedini regolabili / *Stainless steel frame, satin gold effect, adjustable feet*



1836 - SH2  
(Ø 40 x H110 cm) kg 13,5 KD

1838 - SH1  
(40 x 40 x H110 cm) kg 17 KD



398 - 6029I

Struttura in acciaio inox satinato,  
piedini regolabili*Satin stainless steel frame,  
adjustable feet*

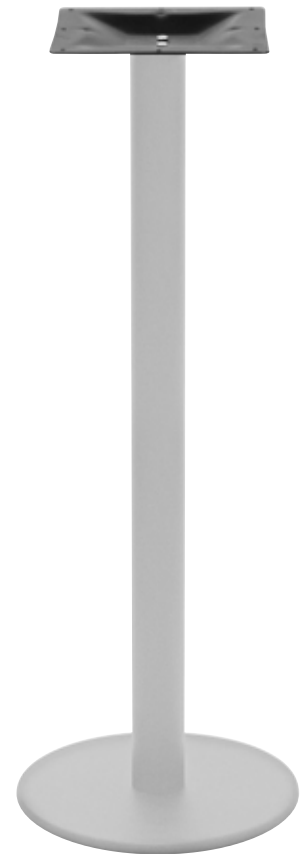
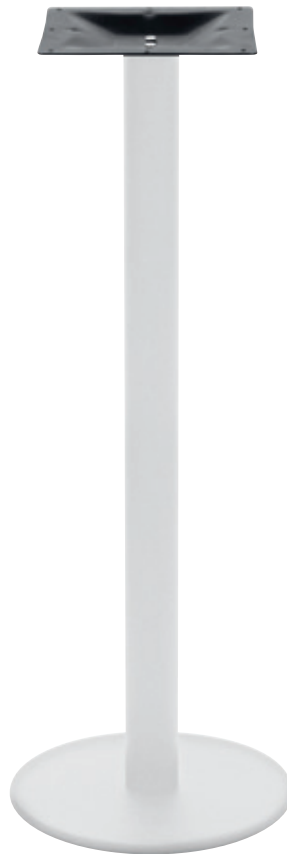
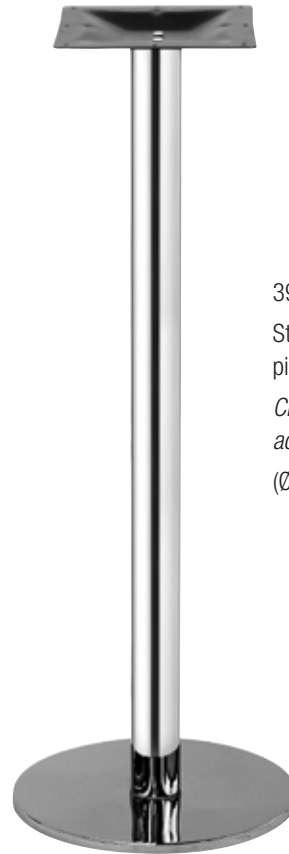
(Ø 40 x H110 cm) kg 13,5 KD



399 - 6029C

Struttura in acciaio inox cromato,  
piedini regolabili*Chromed stainless steel frame,  
adjustable feet*

(Ø 40 x H110 cm) kg 13,5 KD



748 - 34040H

Struttura in acciaio verniciata,  
piedini regolabili*Powder coated steel frame,  
adjustable feet*

(Ø 40 x H110 cm) kg 13,5 KD





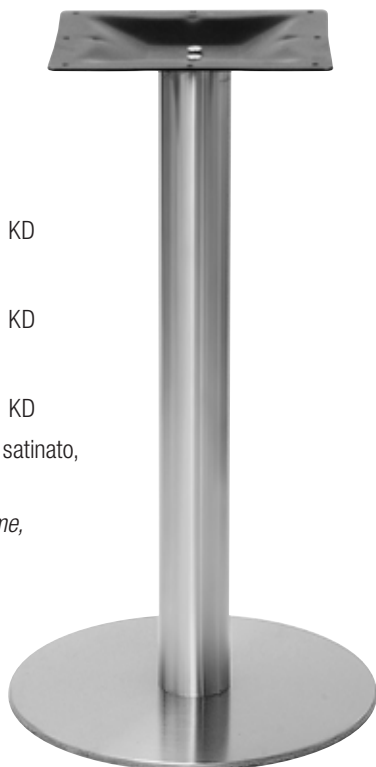
411 - 6028I  
(Ø 40 x H73 cm) kg 12 KD

1272 - 6050L  
(Ø 50 x H73 cm) kg 15 KD

771 - E18SG  
(Ø 58 x H73 cm) kg 18 KD

Struttura in acciaio inox satinato,  
piedini regolabili

*Satin stainless steel frame,  
adjustable feet*



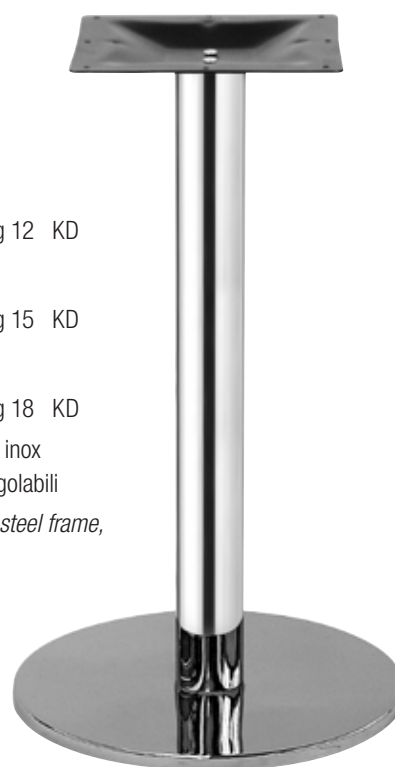
414 - 6028C  
(Ø 40 x H73 cm) kg 12 KD

405 - DC400C  
(Ø 50 x H73 cm) kg 15 KD

407 - DC600C  
(Ø 58 x H73 cm) kg 18 KD

Struttura in acciaio inox  
cromato, piedini regolabili

*Chromed stainless steel frame,  
adjustable feet*

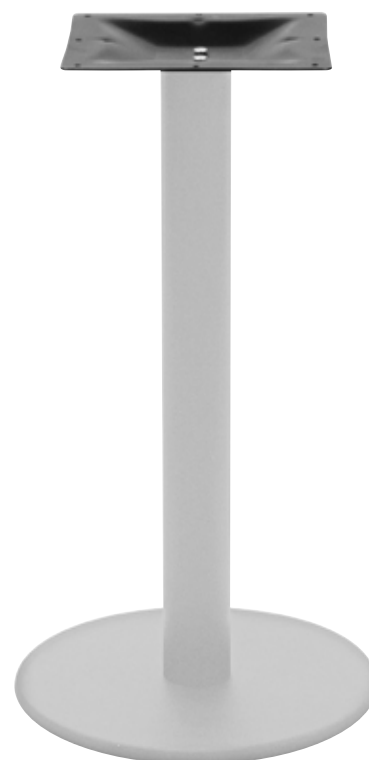


360 - 340N  
(Ø 40 x H72 cm) kg 14 KD

176 - 341N  
(Ø 60 x H72 cm) kg 18 KD

Struttura in acciaio verniciato,  
piedini regolabili

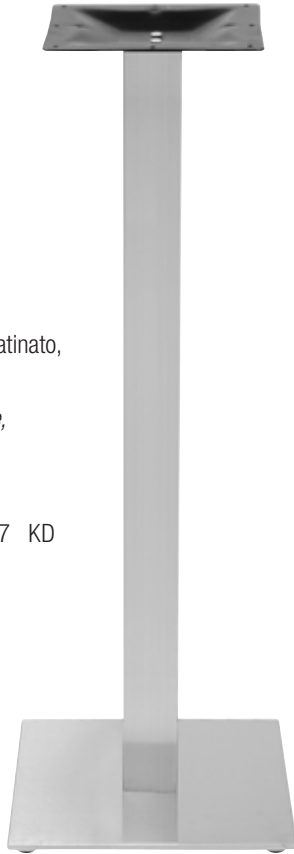
*Powder coated steel frame,  
adjustable feet*



400 - 339HI

Struttura in acciaio inox satinato,  
piedini regolabili*Satin stainless steel frame,  
adjustable feet*

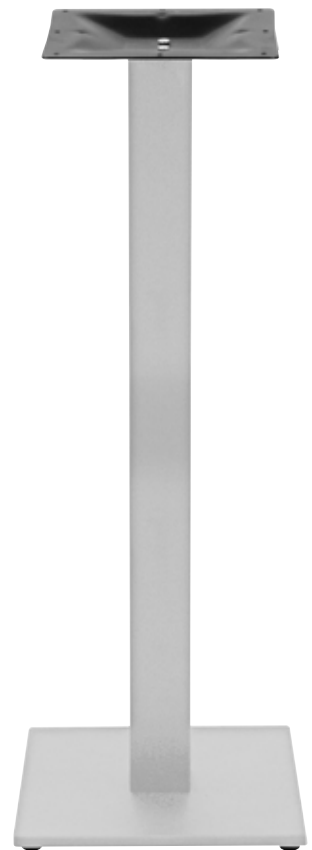
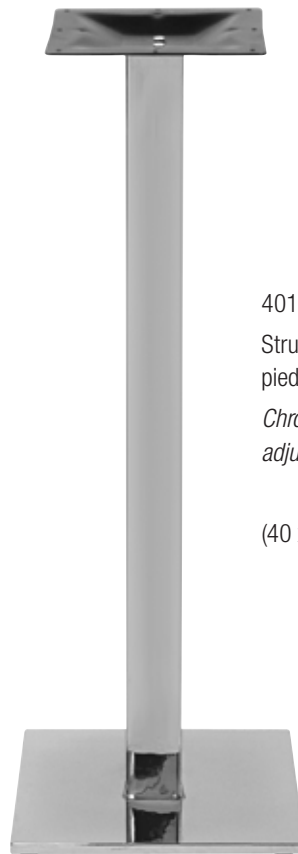
(40 x 40 x H108 cm) kg 17 KD



401 - 339HC

Struttura in acciaio inox cromato,  
piedini regolabili*Chromed stainless steel frame,  
adjustable feet*

(40 x 40 x H108 cm) kg 17 KD



749 - 33940H

Struttura in acciaio verniciata, *Powder coated steel frame,*  
piedini regolabili *adjustable feet*

(40 x 40 x H108 cm) kg 17 KD



363 - 6032I  
(40 x 40 x H72 cm) kg 15 KD

1572 - 6034I  
(50 x 50 x H72 cm) kg 22 KD

Struttura in acciaio inox satinato,  
piedini regolabili

*Satin stainless steel frame,  
adjustable feet*

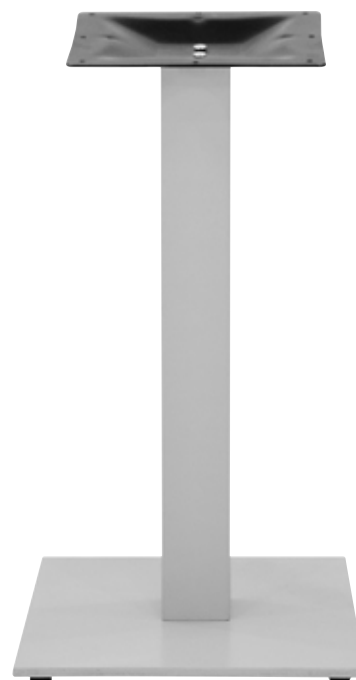
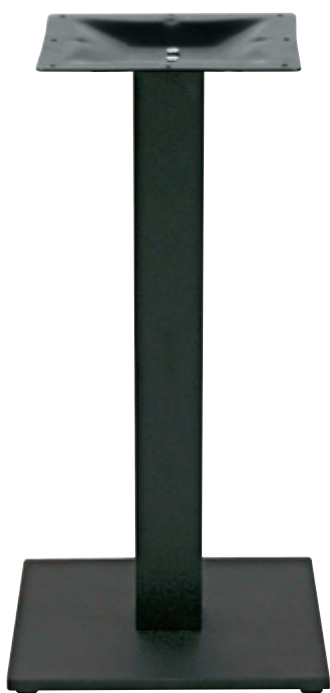
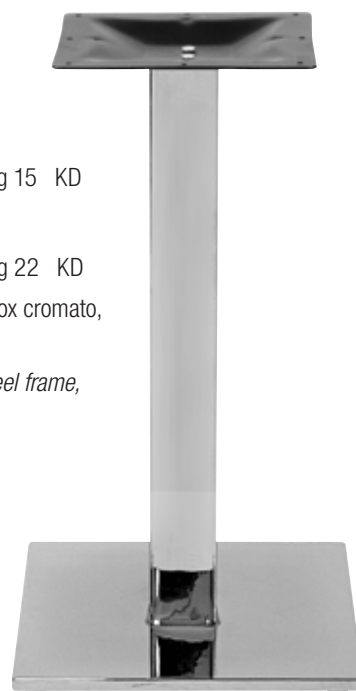


364 - 6032C  
(40 x 40 x H72 cm) kg 15 KD

1571 - 6034C  
(50 x 50 x H72 cm) kg 22 KD

Struttura in acciaio inox cromato,  
piedini regolabili

*Chromed stainless steel frame,  
adjustable feet*



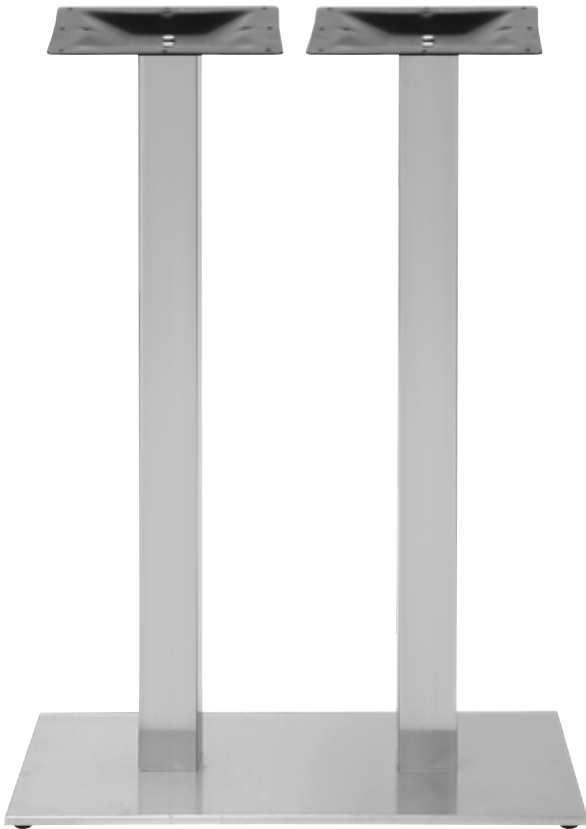
365 - 340N  
(40 x 40 x H72 cm) kg 14 KD

1276 - 350N  
(50 x 50 x H72 cm) kg 22 KD

Struttura in acciaio verniciata,  
piedini regolabili

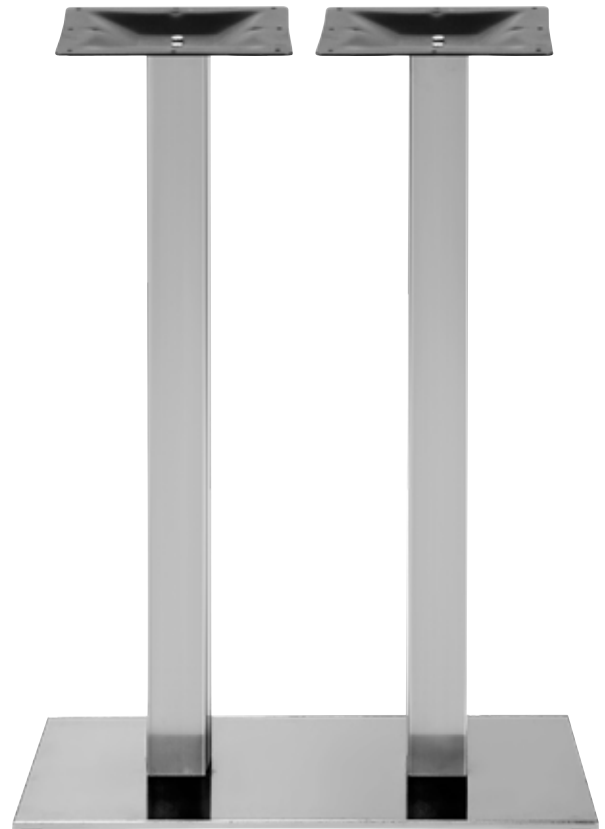
*Powder coated steel frame,  
adjustable feet*





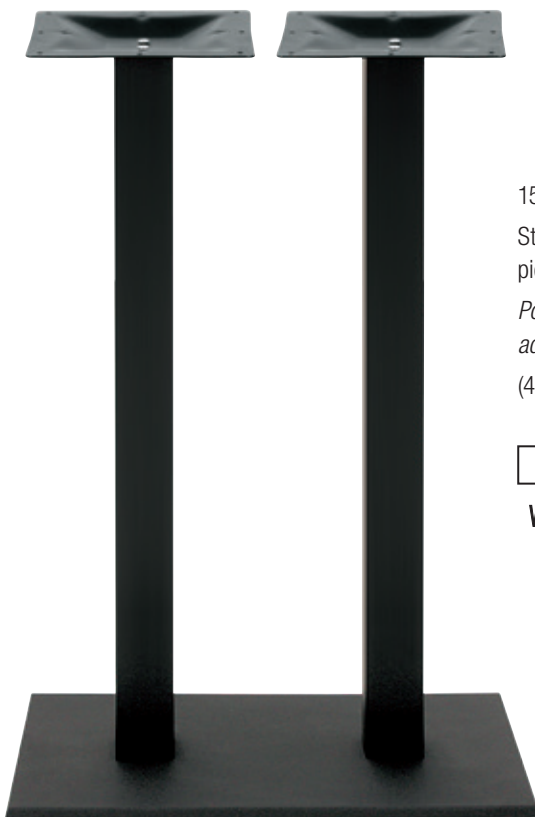
1576 - 6033IH

Struttura in acciaio inox satinato, piedini regolabili  
*Satin stainless steel frame, adjustable feet*  
 (40 x 75 x H108 cm) kg 35 KD



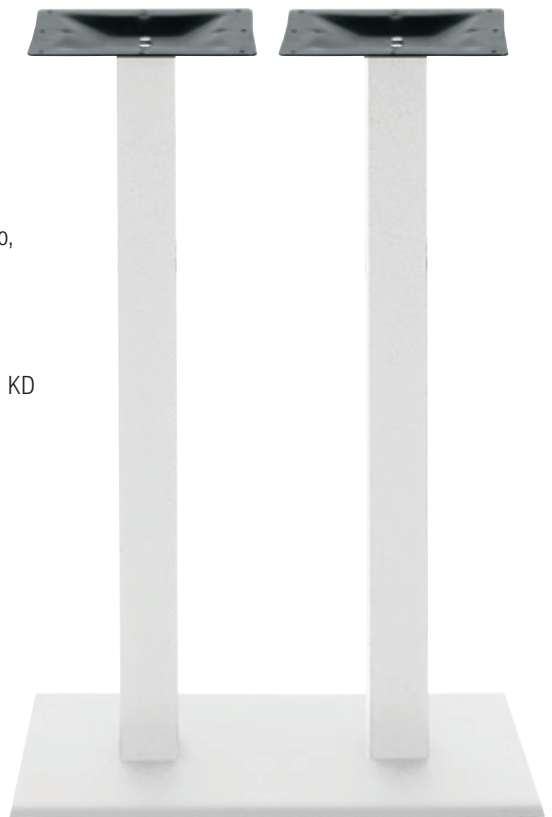
1577 - 341CH

Struttura in acciaio inox cromato, piedini regolabili  
*Chromed stainless steel frame, adjustable feet*  
 (40 x 75 x H108 cm) kg 35 KD



1578 - 341MH

Struttura in acciaio verniciato, piedini regolabili  
*Powder coated steel frame, adjustable feet*  
 (40 x 70 x H108 cm) kg 30 KD





402 - 6033I

Struttura in acciaio inox satinato, piedini regolabili

*Satin stainless steel frame, adjustable feet*

(40 x 75 x H73 cm) kg 33 KD



773 - 341C

Struttura in acciaio inox cromato, piedini regolabili

*Chromed stainless steel frame, adjustable feet*

(40 x 70 x H72 cm) kg 33 KD



403 - 341M

Struttura in acciaio verniciata,  
piedini regolabili

*Powder coated steel frame,  
adjustable feet*

(40 x 70 x H72 cm) kg 28 KD





731 - SH01

Struttura in metallo verniciato, piedini regolabili

*Powder coated metal frame, adjustable feet*

(40 x 40 x H72 cm) kg 12 KD



366 - 313

Struttura in ghisa verniciata, piedini regolabili

*Powder coated cast iron frame, adjustable feet*

(Ø 42,5 x H73 cm) kg 18 KD



779 - TB131

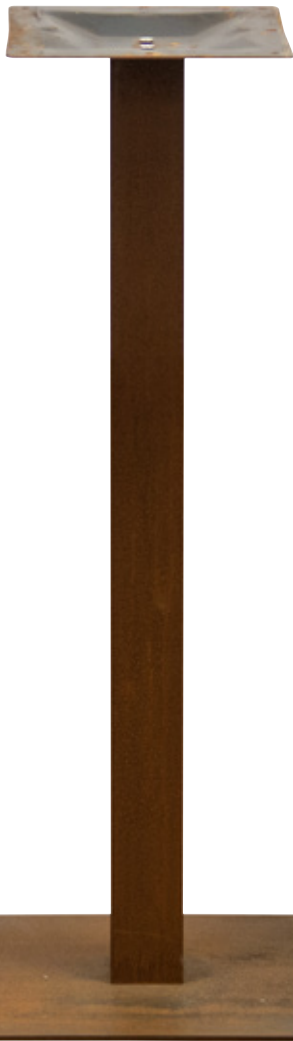
Struttura in acciaio verniciato, piedini regolabili

*Powder coated metal frame, adjustable feet*

(40 x 60 x H73 cm) kg 19 KD



296 - SH12  
(40 x 40 x H72 cm) kg 14 KD



Struttura in acciaio ruggine, piedini regolabili  
*Original rusty metal frame, adjustable feet*

305 - SH13  
(40 x 40 x H110 cm) kg 17 KD



1351 - T11BR  
(H71 cm) kg 12,5 KD



Struttura in ghisa verniciata,  
effetto bronzo, piedini regolabili  
*Powder coated cast iron frame,  
bronze look, adjustable feet*

1353 - T11HBR  
(H108 cm) kg 15 KD



169 - CI155-3  
(H 71cm) kg 11,5 KD



170 - CI155-4  
(H 71cm) kg 12,5 KD



Struttura in ghisa verniciata, piedini regolabili  
*Powder coated cast iron frame, adjustable feet*

660 - 210H  
(H 108 cm) kg 15 KD



661 - 205H  
(H 108 cm) kg 13,5 KD





152 - CA101 (H 70 cm) KD



154 - CA101B (H 70 cm) KD



153 - CA102 (H 70 cm) KD

1273 - CA108 (H 108 cm) KD



155 - CA102B (H 70 cm) KD

Struttura in alluminio verniciato , piedini regolabili  
*Powder coated aluminum frame, adjustable feet*

Struttura in alluminio verniciato effetto bambù, piedini regolabili  
*Powder coated aluminum frame, bamboo look, adjustable feet*



179 - CS2013  
(H 71 cm) Kg 6,5 KD



180 - CS2014  
(H 71 cm) Kg 8,5 KD



450 - MTB012  
(H 108 cm) Kg 9,5 KD



919 - MTB014  
(H 71 cm) Kg 9,10 KD

Struttura in alluminio,  
acciaio e ghisa, piedini regolabili  
*Stainless steel covering base  
and aluminum tube, adjustable feet*



611 - F3

Struttura in alluminio accatastabile  
con accessorio pieghevole,  
piedini regolabili

*Stackable aluminum frame,  
adjustable feet*

(H 72 cm) kg 6,2 KD



W AL N T



1341 - E91

Struttura in alluminio accatastabile  
con accessorio pieghevole,  
piedini regolabili

*Stackable aluminum frame,  
adjustable feet*

(H70 cm) KD



W AL N





774 - HF3

Struttura in alluminio accatastabile con accessorio pieghevole, piedini regolabili

*Stackable aluminum frame,  
adjustable feet*

(H 110 cm) kg 6,8 KD





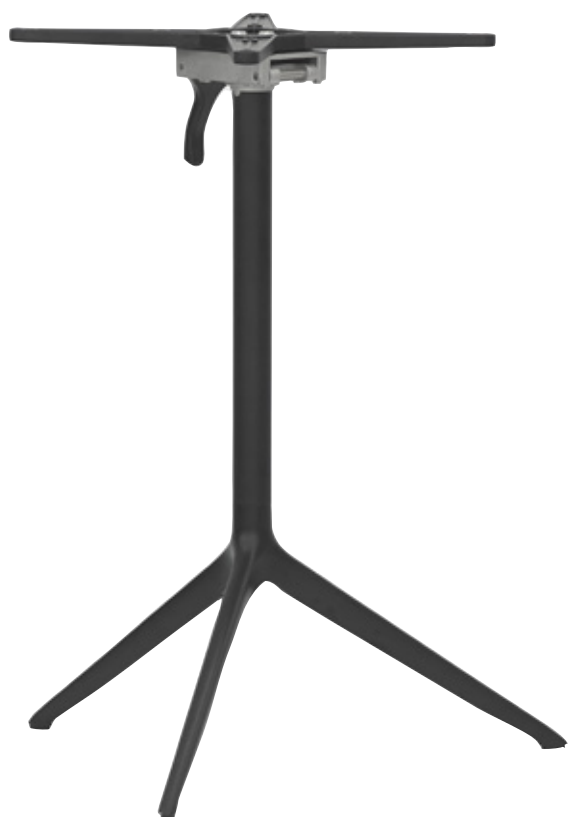
186 - HF4  
(H109 cm)

Struttura in polipropilene e metallo verniciato,  
crocetta in resina, piedini regolabili  
*Polypropylene frame and powder coated metal,  
resin cross, adjustable feet*



185 - F4  
(H74 cm)





692 - C57

Struttura in alluminio verniciato  
accatastabile con accessorio pieghevole

*Stackable aluminum frame, powder coated*  
(H73 cm)



973 - TP

Struttura in alluminio verniciato,  
piedini regolabili

*Powder coated aluminum frame,  
adjustable feet*

(H 70 cm) kg 7,3 KD



920 - MTB013

Struttura in alluminio verniciato,  
piedini regolabili

*Powder coated aluminum frame,  
adjustable feet*

(H 70 cm) KD







974 - THP

Struttura in alluminio verniciato, piedini regolabili

*Powder coated aluminum frame, adjustable feet*

(H 110 cm) kg 7,7 KD





138 - L  
(H 103 cm) KD



133 - D  
(H 70 cm) KD



136 - B  
(H 70 cm) KD

Struttura in alluminio,  
piedini regolabili  
*Aluminum frame,  
adjustable feet*



132 - E  
(H 70 cm) KD



134 - C  
(H 70 cm) KD

135 - A  
(H 70 cm) KD



137 - H  
(H 103 cm) KD



140 - F  
(H 70 cm) KD



Struttura in alluminio,  
pedini regolabili  
*Aluminum frame,  
adjustable feet*



141 - NA Struttura in alluminio H71 cm,  
tubo Ø 25 x 1,5 mm, per  
piano Ø 60 cm  
*Aluminum frame H71 cm,  
tube Ø 25 x 1,5 mm,  
for top Ø 60 cm*

142 - NB Struttura in alluminio H71 cm,  
tubo Ø 28x1,8 mm,  
per piano Ø 70 cm  
*Aluminum frame H71 cm,  
tube Ø 28 x 1,8 mm,  
for top Ø 70 cm*

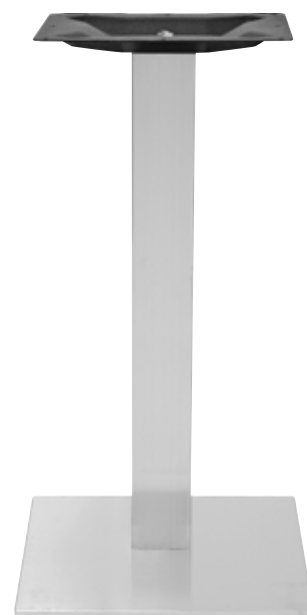


143 - OA Struttura in alluminio H71 cm,  
tubo Ø 25 x 1,5 mm,  
per piano 60 x 60 cm  
*Aluminum frame H71 cm,  
tube Ø 25 x 1,5 cm,  
for top 60 x 60 cm*

144 - OB Struttura in alluminio H71cm,  
tubo Ø 28 x 1,8 mm,  
per piano 70 x 70 cm  
*Aluminum frame H71 cm,  
tube Ø 28 x 1,8 mm,  
for top 70 x 70 cm*

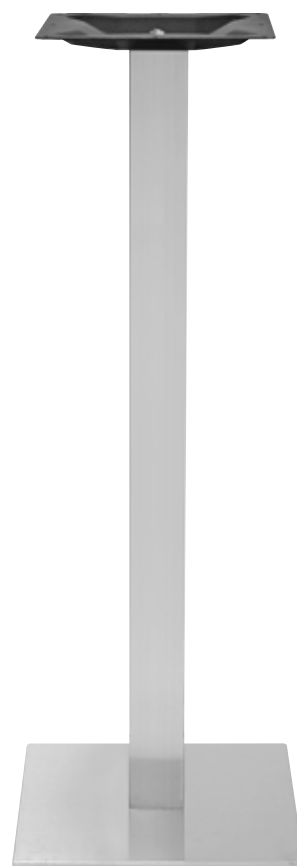
145 - OC Struttura in alluminio H71 cm,  
tubo Ø 28 x 1,8 mm,  
per piano 80 x 80 cm  
*Aluminum frame H71 cm,  
tube Ø 28 x 1,8 mm,  
for top 80 x 80 cm*

843 - OD Struttura in alluminio H71 cm,  
tubo Ø 28 x 1,8 mm,  
per piano 120 x 80 cm  
*Aluminum frame H71 cm,  
tube Ø 28 x 1,8 mm,  
for top 120 x 80 cm*



842 - 6032A

Struttura in alluminio, piedini regolabili / *Aluminum frame, adjustable feet*  
(40 x 40 x H73 cm) kg 15 KD



856 - 339HA

Struttura in alluminio, piedini regolabili / *Aluminum frame, adjustable feet*  
(40 x 40 x H108 cm) kg 17 KD





1349 - B80

Struttura in polipropilene,  
zavorra in metallo

*Polypropylene frame,  
ballast metal round plate*

(Ø40 x H72 cm) kg 11 KD



656 - 340R

Base in alluminio, rivestimento  
in piattina di polietilene,  
piedini regolabili

*Aluminum base, polyethylene  
thread covering*

(Ø40 x H72 cm) kg 12,7 KD





1412 - TB77 (L70 x P70 x H73 cm) KD  
 1413 - TB78 (L80 x P80 x H73 cm) KD  
 1415 - TB712 (L120 x P80 x H73 cm) KD  
 177 - TB718 (L180 x P90 x H73 cm) KD

Struttura in alluminio verniciato,  
 piedini regolabili

*Powder coated aluminum frame,  
 adjustable feet*



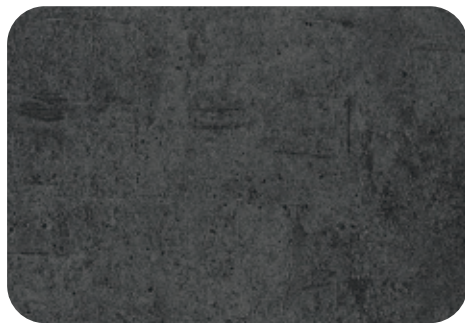
PIANI IN STRATIFICATO HPL "EXTRA"  
HPL PRESSURE LAMINATE TOPS "EXTRA"



COPPER PAINTED



GREY WOOD



METALLIC



TEX STONE



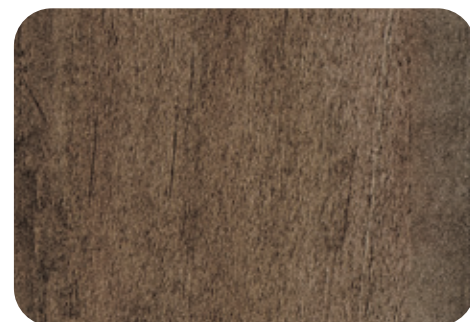
SLEEK LIGHT GREY



BROOKLYN DARK



KARARA WHITE



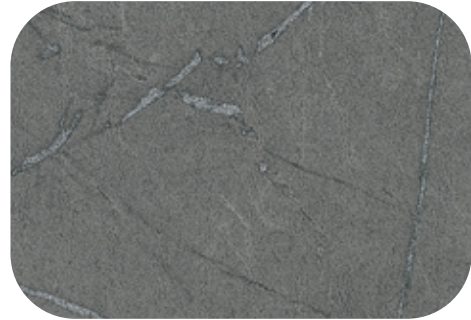
OLD PAINT



**PIANI IN STRATIFICATO HPL "EXTRA"**  
**HPL PRESSURE LAMINATE TOPS "EXTRA"**



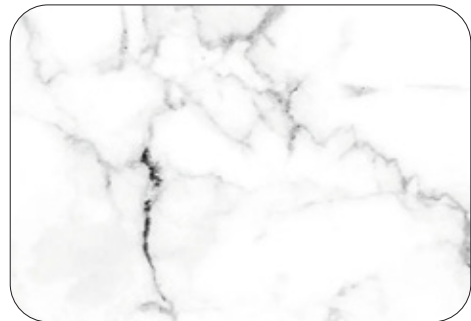
BROOKLIN LIGHT



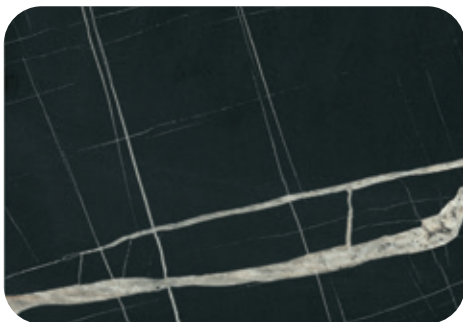
GRAPHITO



GRANITO



STATUARIO



MARMO NERO



AQUA PAINTED METAL



APPLE CRATES



BLU WOOD

PIANI IN STRATIFICATO HPL "EXTRA"  
HPL PRESSURE LAMINATE TOPS "EXTRA"



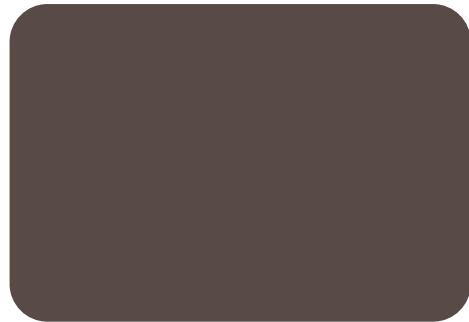
CANYON MONUMENT OAK



URBAN TEAK



WENGÉ



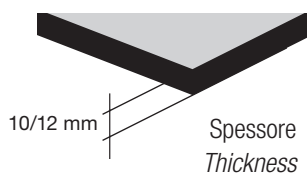
MOKA

spessore / thickness  
10 mm

232 - CRT59 (Ø 60 cm)	235 - CST59 (60 x 60 cm)
233 - CRT69 (Ø 70 cm)	236 - CST69 (70 x 70 cm)
234 - CRT79 (Ø 80 cm)	237 - CST79 (80 x 80 cm)
	238 - CST119 (120 x 80 cm)

spessore / thickness  
12 mm

284 - BRT59 (Ø 60 cm)	287 - BST59 (60 x 60 cm)
285 - BRT69 (Ø 70 cm)	288 - BST69 (70 x 70 cm)
286 - BRT79 (Ø 80 cm)	289 - BST79 (80 x 80 cm)
477 - BRT90 (Ø 90 cm)	476 - BST90 (90 x 90 cm)
481 - BRT120 (Ø 80 cm)	290 - BST119 (120 x 80 cm)
	291 - BST180 (180 x 90 cm)



Bordo (B)  
Edge (B)



Bordo (WH)  
Edge (WH)



Bordo (ZA)  
Edge (ZA)



Anti Bacterial



Resistant  
to Fire



Resistance to  
Water



Easy to  
Clean



Resistant to  
harmful  
chemicals



Hygienic

TUTTI I PIANI IN HPL POSSONO ESSERE PERSONALIZZATI  
ALL HPL TOPS CAN BE CUSTOMIZED

PIANI IN STRATIFICATO HPL "STANDARD"  
HPL PRESSURE LAMINATE TOPS "STANDARD"



BIANCO



TORTORA



NERO / BLACK



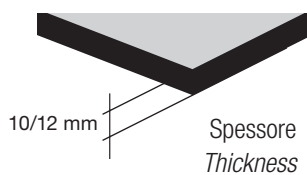
ANTRACITE

spessore / thickness 10 mm

1704 - ART59 (Ø 60 cm)	1707 - AST59 (60 x 60 cm)
1705 - ART69 (Ø 70 cm)	1708 - AST69 (70 x 70 cm)
1706 - ART79 (Ø 80 cm)	1709 - AST79 (80 x 80 cm)
	1710 - AST119 (120 x 80 cm)

spessore / thickness 12 mm

848 - RT59 (Ø 60 cm)	844 - ST59 (60 x 60 cm)
849 - RT69 (Ø 70 cm)	845 - ST69 (70 x 70 cm)
850 - RT79 (Ø 80 cm)	846 - ST79 (80 x 80 cm)
483 - RT90 (Ø 90 cm)	482 - ST90 (90 x 90 cm)
484 - RT120 (Ø 120 cm)	847 - ST119 (120 x 80 cm)
	294 - ST180 (180 x 90 cm)



Bordo (B)  
Edge (B)



Bordo (WH)  
Edge (WH)



Bordo (ZA)  
Edge (ZA)



Anti Bacterial



Resistant  
to Fire



Resistance to  
Water



Easy to  
Clean



Resistant to  
harmful  
chemicals



Hygienic

TUTTI I PIANI IN HPL POSSONO ESSERE PERSONALIZZATI  
ALL HPL TOPS CAN BE CUSTOMIZED

**PIANI E BASI CORRELATI IN HPL COMPACT**  
**RELATED TOPS AND BASES IN HPL COMPACT**

**BASI IN HPL COMPACT / HPL COMPACT BASES**

Basi in stratificato HPL COMPACT, spessore 20 mm, tubo in metallo, piastra superiore (300 x 300 x 3 mm) piedini regolabili  
*HPL compact table bases, tikness 20 mm, metal column, top plate (300 x 300 x 3 mm), adjustable feet*

**Base quadrata, tubo 80x80 mm**  
**Square base, column 80x80 mm**

Colonna nero/bianco - *Column black/white*

225-HPQ 403 (400 x 400 x 20 x H 733 mm) kg 10  
 271-HPQ 405 (400 x 400 x 20 x H 1110 mm) kg 12  
 269-HPQ 501 (500 x 500 x 20 x H 733 mm) kg 13

Colonna in acciaio inox satinato  
*Satin stainless steel column*

226-HPQ 404 (400 x 400 x 20 x H 733 mm) kg 10  
 274-HPQ 406 (400 x 400 x 20 x H 1110 mm) kg 12  
 270-HPQ 502 (500 x 500 x 20 x H 733 mm) kg 13

Colonna ottonata - *Golden effect column*

218-HPQ 408 (400 x 400 x 20 x H 733 mm) kg 10  
 220-HPQ 409 (400 x 400 x 20 x H 1110 mm) kg 12  
 222-HPQ 410 (500 x 500 x 20 x H 733 mm) kg 13

**Base rotonda, tubo Ø 76 mm**  
**Round base, column Ø 76 mm**

Colonna nero/bianco - *Column black/white*

227-HPR 403 (Ø 400 x 20 x H 733 mm) kg 7,5  
 275-HPR 405 (Ø 400 x 20 x H 1110 mm) kg 9,5  
 264-HPR 501 (Ø 500 x 20 x H 733 mm) kg 10,5

Colonna in acciaio inox satinato  
*Satin stainless steel column*

228-HPR 404 (Ø 400 x 20 x H 733 mm) kg 7,5  
 278-HPR 406 (Ø 400 x 20 x H 1110 mm) kg 9,5  
 265-HPR 502 (Ø 500 x 20 x H 733 mm) kg 10,5

Colonna ottonata - *Golden effect column*

329-HPR 408 (Ø 400 x 20 x H 733 mm) kg 7,5  
 330-HPR 409 (Ø 400 x 20 x H 1110 mm) kg 9,5  
 331-HPR 410 (Ø 500 x 20 x H 733 mm) kg 10,5



HPL COMPACT "KARARA WHITE"



HPL COMPACT "KARARA WHITE"



HPL COMPACT "KARARA WHITE"



HPL COMPACT "BROOKLIN LIGHT"





HPL COMPACT "BROOKLIN LIGHT"



HPL COMPACT "BROOKLIN LIGHT"



HPL COMPACT "BROOKLYN DARK"



HPL COMPACT "BROOKLYN DARK"



HPL COMPACT "OLD PAINT"



HPL COMPACT "URBAN TEAK"



HPL COMPACT "CANYON MONUMENT OAK"



HPL COMPACT "BLUE WOOD"





HPL COMPACT "COPPER PAINTED"

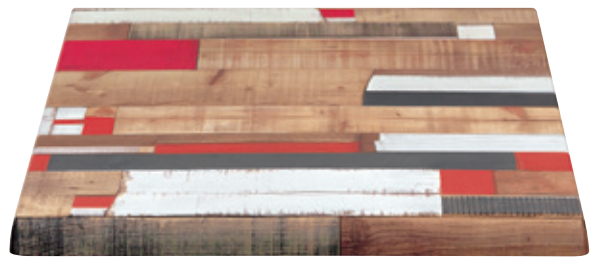
PIANI PER ESTERNO "WERZALIT"  
*OUTDOOR TOPS "WERZALIT"*



RUSTBROWN



KBANA ROUGE



KBANA TAUPE



KANSAS



ARIZONA



634 - R060 (Ø 60 cm)  
 635 - R070 (Ø 70 cm)  
 636 - R080 (Ø 80 cm)

630 - SQ60 (60 x 60 cm)  
 631 - SQ70 (70 x 70 cm)  
 632 - SQ80 (80 x 80 cm)  
 633 - SQ120 (120 x 80 cm)

PIANI PER ESTERNO "WERZALIT"  
 OUTDOOR TOPS "WERZALIT"



OAK AN TIC



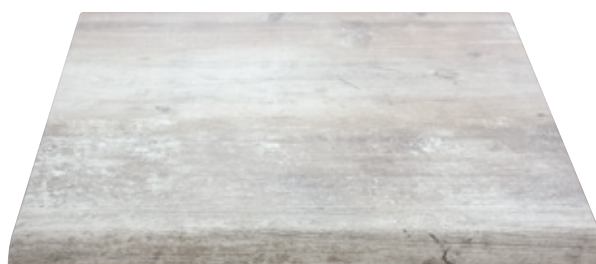
ANTRACITE



WENGHE



FINDUS GREY



MONTPELLIER



634 - R060 (Ø 60 cm)  
 635 - R070 (Ø 70 cm)  
 636 - R080 (Ø 80 cm)

630 - SQ60 (60 x 60 cm)  
 631 - SQ70 (70 x 70 cm)  
 632 - SQ80 (80 x 80 cm)  
 633 - SQ120 (120 x 80 cm)

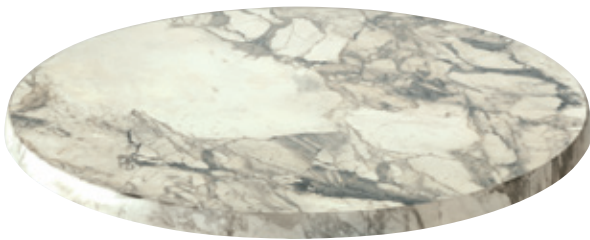
PIANI PER ESTERNO "WERZALIT"  
*OUTDOOR TOPS "WERZALIT"*



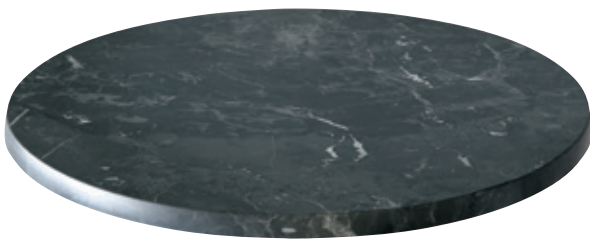
ALU



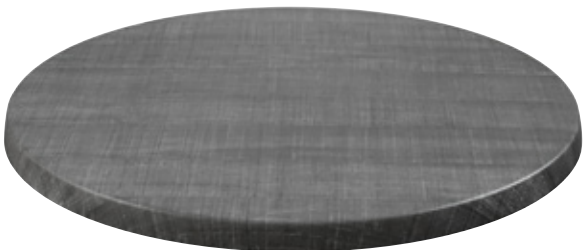
TRAVERTIN



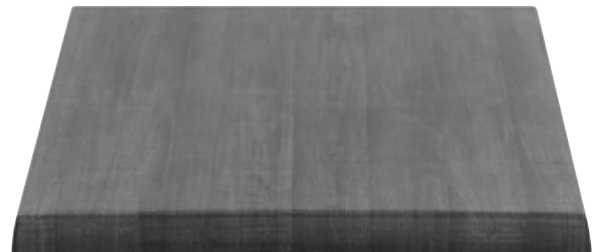
MARBLE ALMERIA



MARBLE MARQUINA



PAUSSADE GRIS



634 - R060 (Ø 60 cm)  
 635 - R070 (Ø 70 cm)  
 636 - R080 (Ø 80 cm)

630 - SQ60 (60 x 60 cm)  
 631 - SQ70 (70 x 70 cm)  
 632 - SQ80 (80 x 80 cm)  
 633 - SQ120 (120 x 80 cm)

**PIANI PER ESTERNO "WERZALIT"**  
**OUTDOOR TOPS "WERZALIT"**



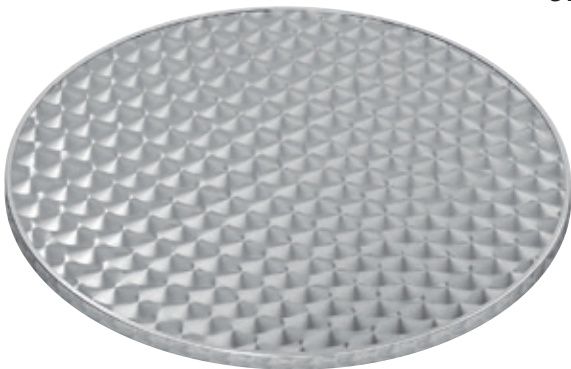
BLANC



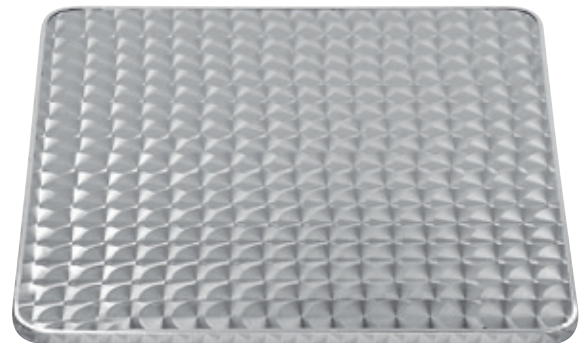
NOIRE



**PIANI IN ACCIAIO**  
**STAINLESS STEEL TOPS**



187 - MAR1 (Ø 60 cm)  
 188 - MAR2 (Ø 70 cm)  
 189 - MAR3 (Ø 80 cm)



190 - MAS1 (60 x 60cm)  
 191 - MAS2 (70 x 70cm)  
 192 - MAS3 (80 x 80cm)  
 776 - MAS7 (120 x 80cm)

**PIANI IN DOGHE DI LEGNO BORDATI IN ALLUMINIO**  
**WOOD BAND TOPS, ALUMINUM EDGE**



196 - MLR1 (Ø 60 cm)  
 197 - MLR2 (Ø 70 cm)  
 198 - MLR3 (Ø 80 cm)



199 - MLS1 (60 x 60 cm)  
 200 - MLS2 (70 x 70 cm)  
 201 - MLS3 (80 x 80 cm)  
 203 - MLS5 (120 x 70 cm)

## PIANI IN TEAK / TEAK TOPS



- 1219 - TGF260A (60 x 60 x 2,7 cm)
- 1220 - TGF260B (70 x 70 x 2,7 cm)
- 1221 - TGF260C (80 x 80 x 2,7 cm)
- 1223 - TGF257B (120 x 80 x 2,7 cm)



- 1216 - TGF258A (Ø 60 x 2,7 cm)
- 1217 - TGF258B (Ø 70 x 2,7 cm)
- 1218 - TGF258C (Ø 80 x 2,7 cm)



BASE - BASE  
611 - F3 - pg. 360

## PIANI IN TEAK / TEAK TOPS



696 - TKS60 (60 x 60)  
 701 - TKS70 (70 x 70)  
 703 - TKS80 (80 x 80)  
 704 - TKS120 (120 x 80)



707 - TKR60 (Ø 60)  
 708 - TKR70 (Ø 70)  
 709 - TKR80 (Ø 80)



BASE - *BASE*  
 185 - F4 - *pg. 362*

**PIANI DA INTERNO EXTRA**  
**INDOOR TOPS EXTRA**



PIANO LAMINATO BORDO ABS OTTONATO SPESSORE 30 mm

002 - SFB01	(60 x 60 cm)
003 - SFB02	(70 x 70 cm)
008 - SFB03	(80 x 80 cm)
009 - RFB04	(Ø 60 cm)
014 - RFB05	(Ø 70 cm)
017 - RFB06	(Ø 80 cm)



PIANO COMPLETO DI VETRO, RETROLACCATO AL COLORE  
RICHIESTO SPESSORE 30 mm

018 - SFB07	(60 x 60 cm)
019 - SFB08	(70 x 70 cm)
021 - SFB09	(80 x 80 cm)
022 - RFB10	(Ø 60 cm)
023 - RFB11	(Ø 70 cm)
027 - RFB12	(Ø 80 cm)



PIANO IN LAMELLARE DI ABETE STAMPATO SPESSORE 40 mm

028 - SFB13	(60 x 60 cm)
029 - SFB14	(70 x 70 cm)
030 - SFB15	(80 x 80 cm)



PIANO ROVERE TINTO BORDO CORTECCIA SPESSORE 40 mm

032 - SFB16	(60 x 60 cm)
033 - SFB17	(70 x 70 cm)
034 - SFB18	(80 x 80 cm)



PIANO IN LAMINATO EFFETTO PIASTRELLA BORDO IN LEGNO  
SPESSORE 20 mm

036 - SFB19	(60 x 60 cm)
044 - SFB20	(70 x 70 cm)
045 - SFB21	(80 x 80 cm)



## PIANI IN LAMINATO / LAMINATE TOPS



ROVERE SBIANCATO FA1014



FA3849



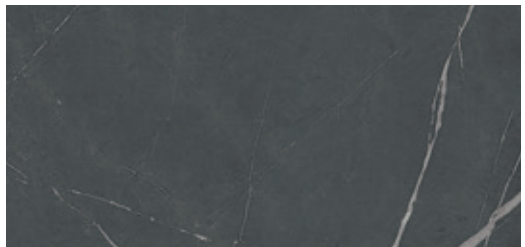
ROVERE 7 NODI FA3755



FA4767



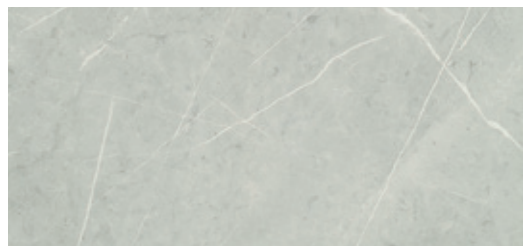
ROVERE TINTO GRIGIO SCURO FA6544



FA5849



ROVERE TINTO GRIGIO MEDIO FA7144

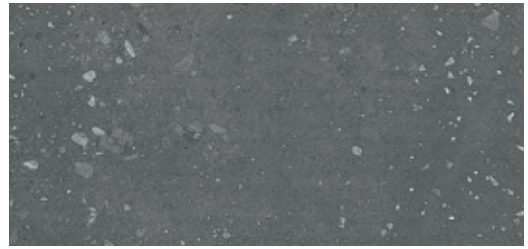


FA2047

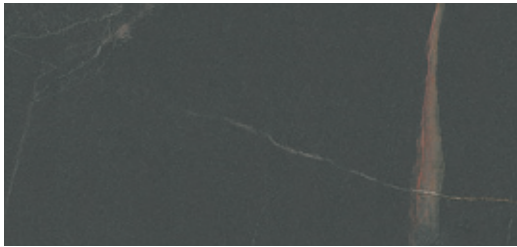
## PIANI IN LAMINATO / LAMINATE TOPS



MARMO LUCIDO BIANCO FA0643



ROX BLACK



MARMO ELITE



NOCE FA0825



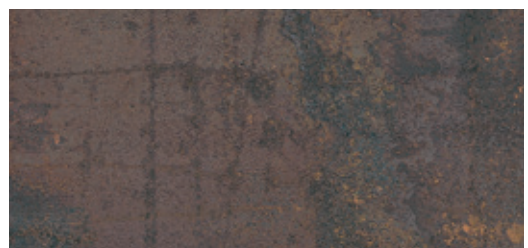
PULPIS LIGHT



ROVERE NATURALE FA1001



CUMA LIGHT



CORTEN FA8934

## PIANI IN LAMINATO / LAMINATE TOPS



MARMO LUCIDO NERO FA6743



CEMENTO FA7044

**BORDO ABS IN TINTA**  
**ABS EDGE**


## SPESSORE 24mm / THICKNESS 24mm

1356 - ST60 (60 x 60 cm)	1360 - RT60 (Ø 60 cm)
1357 - ST70 (70 x 70 cm)	1361 - RT70 (Ø 70 cm)
1358 - ST80 (80 x 80 cm)	1362 - RT80 (Ø 80 cm)
1359 - ST120 (120 x 80 cm)	

## SPESSORE 30mm / THICKNESS 30mm

1363 - ST63 (60 x 60 cm)	1367 - RT63 (Ø 60 cm)
1364 - ST73 (70 x 70 cm)	1368 - RT73 (Ø 70 cm)
1365 - ST83 (80 x 80 cm)	1369 - RT83 (Ø 80 cm)
1366 - ST123 (120 x 80 cm)	

## SPESSORE 40mm / THICKNESS 40mm

1370 - ST64 (60 x 60 cm)	1374 - RT64 (Ø 60 cm)
1371 - ST74 (70 x 70 cm)	1375 - RT74 (Ø 70 cm)
1372 - ST84 (80 x 80 cm)	1376 - RT84 (Ø 80 cm)
1373 - ST124 (120 x 80 cm)	

## SPESSORE 50mm / THICKNESS 50mm

1377 - ST65 (60 x 60 cm)	1381 - RT65 (Ø 60 cm)
1378 - ST75 (70 x 70 cm)	1382 - RT75 (Ø 70 cm)
1379 - ST85 (80 x 80 cm)	1383 - RT85 (Ø 80 cm)
1380 - ST125 (120 x 80 cm)	

**BORDO IN GOMMA**  
**RUBBER EDGE**


## SPESSORE 24mm / THICKNESS 24mm

1384 - STG60 (60 x 60 cm)	1388 - RTG60 (Ø 60 cm)
1385 - STG70 (70 x 70 cm)	1389 - RTG70 (Ø 70 cm)
1386 - STG80 (80 x 80 cm)	1390 - RTG80 (Ø 80 cm)
1387 - STG120 (120 x 80 cm)	

## SPESSORE 27mm / THICKNESS 27mm

1391 - STG62 (60 x 60 cm)	1395 - RTG62 (Ø 60 cm)
1392 - STG72 (70 x 70 cm)	1396 - RTG72 (Ø 70 cm)
1393 - STG82 (80 x 80 cm)	1397 - RTG82 (Ø 80 cm)
1394 - STG122 (120 x 80 cm)	

## SPESSORE 30mm / THICKNESS 30mm

1398 - STG63 (60 x 60 cm)	1402 - RTG63 (Ø 60 cm)
1399 - STG73 (70 x 70 cm)	1403 - RTG73 (Ø 70 cm)
1400 - STG83 (80 x 80 cm)	1404 - RTG83 (Ø 80 cm)
1401 - STG123 (120 x 80 cm)	

**TUTTI I PIANI IN LAMINATO POSSONO ESSERE  
PERSONALIZZATI NEI COLORI E NELLE MISURE**  
**ALL LAMINATE TOPS CAN BE CUSTOMIZED  
IN COLORS AND SIZES**

**Basi & piani  
per tavoli**

***Table bases  
& tops***